



本图册受知识产权保护，翻版必究。  
This book is protected by intellectual property rights, all rights reserved.

## 威骏（湖北）高新实业股份有限公司 VANJOIN GROUP

公司总部 Headquarter 武汉市硚口区保利香槟国际 邮编：430034  
Floor 14, Golden Block, Poly Champagne International Building,  
Hanxi 1st Road, Qiaokou District, Wuhan, Hubei, 430034 China

销售办公室 Sales Office 上海市浦东新区新金桥路58号银东大厦11楼  
Floor 11, Yindong Building, No.58 Xinqinqiao Road, Pudong New  
District, Shanghai, China

生产基地 Production Base 徐州·京山  
Xuzhou·Jingshan

电话/Tel (0086)027-83759888(国内 Domestic), 82801008(国外 Overseas)  
手机/Mob 国内 (Domestic) : 13657289777, 13657290777;  
国外 (Overseas) : (0086)13659879642;  
售后电话 (After-sale Service Hotline) : 13657290777

网址/Website www.vanjoinmcm.com www.vanjoinbuild.com



关注官网  
Scan for Website



关注微信公众号  
Scan for Wechat Public Number



您的满意是我们的唯一使命  
Your satisfaction is our only mission.

股票代码：872315  
STOCK CODE 872315



# FLEXIBLE TILE 软瓷 功能生态材料



企业愿景 携手万卓  
用科技还地球一些绿色

Joining Hands with VANJOIN,  
Giving More Greenness Back to the Earth by Technology.

COMPANY PHILOSOPHY

企业理念

威骏（湖北）高新实业股份有限公司成立于2006年，位于九省通衢的江城武汉。

Vanjoin Group was established in 2006, located in Wuhan City, with convenient transportation.

历经十八年的快速发展，威骏集团已经拥有威骏（湖北）高新实业股份有限公司、湖北京骏建筑有限公司、艾科豪斯（武汉）新材料有限公司、徐州威骏五金工具制造有限公司、万卓（武汉）新材料有限公司、万卓（江苏）新材料有限公司等多家全资子公司。

With over 18 years' rapid development, Vanjoin owns 6 subsidiaries: Vanjoin Group, Hubei Vanjoin Building Co., Ltd., Ecohouse (Wuhan) New Material Co., Ltd., Xuzhou Vanjoin Hardware Tools Manufacturing Co., Ltd., Vanjoin (Wuhan) New Material Co., Ltd. and Vanjoin (Jiangsu) New Material Co., Ltd.

威骏现已成为集轻质节能保温墙体材料及配套生产线、新型生态饰面材料及配套生产线、生态节能集成住宅的设计、研发、生产、生产技术输出及海内外销售于一体的多元大型集团公司。威骏股份已在全国股转系统挂牌上市，股票代码872315。

Vanjoin Group has now become a diversified group company with design, R&D, manufacturing, production technology export and international sales for lightweight energy saving insulated wall material and related production line, new ecological decoration material and related production line, as well as ecological energy-saving integrated houses. VANJOIN has been listed with Stock Code 872315.



企业核心价值  
Vanjoin' s Core Values

忠诚敦厚 人之根基  
博观约取 厚积薄发  
Loyalty and sincerity, foundation of a person; wide view and frugal use, profound accumulation and gradual delivery.



经营哲学  
Business Philosophy

小胜靠智 大胜靠德  
居安思危 有备无患  
Narrow victory by wisdom, solid victory by morality; being vigilant in peace time, forethought prevents calamity.



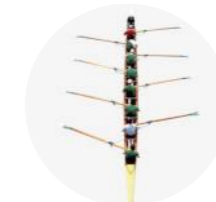
企业愿景  
Vanjoin' s Vision

用科技还地球一些绿色  
Return greenness to the earth by science and technology.



服务理念  
Service Concept

爱人者 人恒爱；敬人者 人恒敬  
Love and be loved; respect and be respected.



质量方针  
Quality Policy

您的满意是我们的唯一使命  
Your satisfaction is our only mission.



企业使命  
Vanjoin' s Mission

为天下谋繁盛 为社会谋进取  
为企业谋卓越 为员工谋福祉  
Seeking prosperity for the world, progress for society, excellence for the enterprise, welfare for the employees.

## 零污染 源自天然

万卓生态软瓷荣获国家发明专利数十项，是国家重点扶持的新型节能、利废、环保高科技生态功能新型饰面材料，它以天然改性矿粉为主要原料，以天然绿色植物纤维为高分子增强材料，通过特定辐照交联反应而成。产品成型过程中实现零排放、零污染，是真正的新型环保材料。可广泛应用在建筑业各种场景中，节约能耗、循环利用，源于自然，还于自然。

天然改性矿粉类属矿物质，自身具有防水、不易粉化、自带颜色的天然特性，同时具有高度黏结性，可自聚合为三维立体交联结构，加上天然植物纤维的增韧效应，形成了万卓生态软瓷天然防水、永不粉化、色彩历久弥新的优良特性。



### 天然防水

改性矿粉的天然疏水组织结构，使万卓生态软瓷具有天然防水的优良特性。



### 永不粉化

改性矿粉的天然抗风化、抗老化及抗腐蚀性，使万卓生态软瓷具有永不粉化的优良特性。



### 色彩持久

改性矿粉自带颜色，表里同色，使万卓生态软瓷具有色彩历久弥新及高度保真的优良特性。

## ZERO POLLUTION OBTAIN FROM NATURE

Vanjoin flexible tile is a new energy saving high-tech ecological decoration material with state special support and dozens of patents. It adopts natural modified mineral powder as aggregates, green plant fiber and other natural polymers as reinforced materials, and is formed through light enzyme irradiation reaction. The whole production process realized zero emission and zero pollution. It is real new environmental material, which can be widely applied to various architecture scenarios, thereby saving energy, recyclable, obtaining from nature and return to nature.

Natural modified mineral powder belongs to mineral substances, which has natural features of waterproof, not easy to get powdering and with its own colors, and it's highly cohesive at same time, it can be polymerized for 3D crosslinked structure. With toughening effect of natural plant fiber, it gives Vanjoin flexible tile excellent performance of natural waterproof, never powdering and long-lasting colors.

### Natural Waterproof

Hydrophobic structure of modified mineral powder makes Vanjoin flexible tile with the advantage of natural waterproof.

### Never Powdering

Natural anti-weathering, anti-aging and anti-corrosion of modified mineral powder makes Vanjoin flexible tile with the advantages of never powdering.

### Long-lasting Color

With natural color of natural modified mineral powder, Vanjoin flexible tile bears the advantage of long-lasting color and high fidelity.



## 绿色植物纤维再利用

RECYCLING OF GREEN PLANT FIBER



INVENTION PATENTS  
发明专利



TEST CERTIFICATES  
检测证书



万卓生态软瓷SGS阻燃认证  
Vanjoin Flexible Tile SGS Flame Retardant Qualification



万卓生态软瓷国家建筑材料测试中心报告  
Vanjoin Flexible Tile Test Report by National Building Materials Research & Testing Center



威骏绿色墙体系统CE认证  
CE Certified Vanjoin Flexible Tile Green Wall System



万卓生态软瓷专用粘合剂CE认证  
CE Certified Vanjoin Flexible Tile Adhesive



万卓生态软瓷北美ASTM检测报告  
Vanjoin Flexible Tile North America ASTM Test Report



万卓生态软瓷MSDS报告  
MSDS Test Report of Vanjoin Flexible Tile



万卓生态软瓷欧标重金属检测报告  
Vanjoin Flexible Tile Migration of Heavy Metals Test Report



万卓生态软瓷欧标甲醛检测报告  
Vanjoin Flexible Tile CE Formaldehyde Content Report



## 造型多变 栩栩如生 VARIOUS STYLES & VIVID APPEARANCES

万卓生态软瓷源自大自然，逼真度极高，造型无限，尺寸可调，自由拼接，可完美达到天然石材、木材、皮纹等装饰效果，不管是简约现代还是古韵遗风，都能满足您对建筑装饰的所有想象。

Vanjoin Flexible Tile takes natural materials as raw materials. With high fidelity, infinite styling, adjustable size, free piecing(together), it can achieve the perfect decorative effects of natural stone, wood, leather, etc., which can fulfill all of your imagination of architectural decorations.



## 防水自清洁 历久弥新 WATERPROOF SELF-CLEANING & SIEMPRE VIVIRE

万卓生态软瓷采用独特纳米技术，产品表面呈现荷叶效应，水面接触角超过120度，具有优越的防水及表面自清洁功能，从此告别高空清理作业。

Vanjoin Flexible Tile takes unique NT (Nano Technology), product surface appears lotus effect and the contact angle of water surface reaches more than 120 degree. Therefore, it bears good performance of excellent waterproof, surface self-cleaning and high-rise building cleaning is no longer needed.



## 抗冻融 耐老化 百年如一 FREEZE-THAW RESISTANCE, ANTI-AGING, REMAIN THE SAME IN A CENTENARY

万卓生态软瓷经过严格的质量测试，在极端恶劣条件(温度正负50摄氏度交替)实验抗冻融超过100次，不开裂，不粉化，不变形，百年如一。

Vanjoin Flexible Tile has got through strict quality tests. There are no cracking, no powdering, no deformation in extreme conditions(temperature changed alternately between plus 50 degrees Celsius and minus 50 degrees Celsius). The anti-freeze-thaw experiments have been carried out for more than one hundred times, which proved that the products can remain the same in a centenary.



## 表里同色 抗紫外线 色彩持久保真 FULL BODY, ANTI UV, NEVER FADE

万卓生态软瓷采用的天然改性矿粉自带颜色，绚丽多彩，表里同色，同时具有高效抗紫外线功能，真正实现色彩持久保真。

With the natural color of natural modified mineral powder, Vanjoin Flexible Tile bears bright and various colors, surface and inside keep in same color. Meanwhile, with the function of anti UV effectively, the color will never fade.



## 轻质节能 运输便利 施工高效 LIGHT WEIGHT , ENERGY SAVING , EASY TRANSPORT, FAST CONSTRUCTION

万卓生态软瓷自重约是瓷砖的七分之一，节省运输成本，施工费用约为瓷砖三分之一。

Vanjoin Flexible Tile's weight is 1/7 of ceramic tiles, largely saving the transport costs, and the construction cost is 1/3 of ceramic tiles.



## A1级防火, 高效阻燃 LEVEL -A1 FIRE RETARDANT, EFFECTIVE FLAME RETARDANT

万卓生态软瓷的主要成分天然改性矿粉为优质无机耐火材料，产品达到A1级防火标准，有效降低火灾风险，守卫温馨家园。

Vanjoin Flexible Tile's main ingredient(ie. natural modified mineral powder) is the one with good quality and refractory and inorganic nature. The products reach Level A1 fireproof standard, reducing fire risk effectively and guarding cozy home.



## 三维吸音, 改善城市噪音污染 3D SOUND-ABSORBING, IMPROVE URBAN NOISE POLLUTION

天然改性矿粉和绿色植物纤维等天然高分子通过交联反应使万卓生态软瓷具有三维立体网状交联微观海绵状结构，可以有效吸收城市噪音，改善城市噪音污染。

Through cross-linking reaction, natural modified mineral powder, green plant fiber and other natural polymers make 3D mesh cross-linking micro-sponge structure bear in Vanjoin Flexible Tile, absorbing the city noise effectively, and therefore lessening urban noise pollution.



## 纹理自然, 无光污染 NATURAL TEXTURE, NON LIGHT POLLUTION

表面纹理自然不反光，对阳光无折射反射，拒绝光污染，改善城市交通安全。

It is natural texture without reflecting light, without refracting and sunshine reflecting, refusing light pollution, improving the city traffic safety .



EXPERT TEAM  
专家团队

|  |   |
|--|---|
|   | <p><b>徐琪 博士</b><br/>Qi Xu Doctor</p> <p>研究方向：功能高分子材料，复合材料<br/>Research Direction: Functional polymer materials, composite materials</p> |
|   | <p><b>付慧莉 博士</b><br/>Huili Fu Doctor</p> <p>研究方向：研究领域为生物可降解高分子材料<br/>Research Direction: Biodegradable polymer materials</p>            |
|  | <p><b>常春雨 博士</b><br/>Chunyu Chang Doctor</p> <p>研究方向：纳米高分子材料，天然高分子材料<br/>Research Direction: Nano polymer materials,</p>                |

|   |   |
|---|---|
|   | <p><b>赵三平 博士</b><br/>Sanping Zhao Doctor</p> <p>研究方向：高性能树脂合成及其复合材料；环保型增塑剂及其产业化<br/>Research Direction: High performance resin synthesis and composite materials; Environmental friendly plasticizer and its industrialization</p> |
|   | <p><b>马兆成 博士</b><br/>Zhaocheng Ma Doctor</p> <p>研究方向：天然生物材料，废旧材料的循环利用<br/>Research Direction: Natural biomaterials, Recycling of waste materials</p>  |
|  | <p><b>张传杰 博士</b><br/>Chuanjie Zhang Doctor</p> <p>研究方向：高性能树脂合成及其复合材料<br/>Research Direction: High performance resin synthesis and composite materials</p>   |

公司与武汉大学、武汉工程大学、武汉纺织大学等多所高校及科研机构、新材料行业协会等机构相关专家学者建立了广泛的技术合作关系，坚持大力研发投入，并建立由18位博士、硕士等高学历背景人才为核心的研发生产基地。公司先后荣获多项国家发明专利，取得各项国内外产品质量认证、管理体系认证，包括：SGS产品检测认证、CE产品检测认证、阿里巴巴金品诚企、ISO9001质量管理体系、ISO14001环境管理体系和OHSAS18001职业健康安全管理体系等。

经过十八年的风雨历程，公司拥有了一支优质的科研服务团队，并凭着积极创新务实的探索精神为客户解决了众多的技术难题。

VANJOIN has established a wide range of technical cooperation with Chinese Universities such as Wuhan University, Wuhan Engineering University, Wuhan Textile University and many other colleges and universities, scientific research institutions and new materials industry associations, strongly invest in R & D, and established the core R & D and production base by 18 Doctors and masters with high education background. Our company has the honor to get many patents, obtain the national product quality certifications, and management system certifications including SGS, CE, Alibaba golden supplier, ISO9001 quality management system, ISO14001 environmental management system, and OHSAS18001 occupational health and safety management system.

After 18 years of development, our company owns an excellent scientific research service team, and with the positive and innovative spirit of exploration, we solved a number of technical problems for customers.

PROFESSIONAL SERVICES  
专业服务



**服务理念**  
SERVICE PHILOSOPHY

**您的满意是我们的唯一使命**  
Your satisfaction is our only mission



**服务承诺**  
SERVICE COMMITMENTS

**国内首家PICC承保软瓷产品，保证70年不脱落，出现任何质量问题免费更换。**  
(24小时售后服务电话：027-83759888 13657290777)

Our soft ceramic tiles is the first one who is underwritten by PICC and ensure that it will not fall off within 70 years. There is any quality problems, we will replace it for free.  
(24 hours after-sales service Tel: +86-027-82801008 Mob: +86-13659879642)



**专业设计**  
PROFESSIONAL DESIGN

**专业设计团队为您提供外墙、室内、展厅等多种设计方案**

Professional design team provide you various designs for external walls, indoor and exhibition hall.



**施工指导**  
CONSTRUCTION GUIDANCE

**专业人员第一时间上门指导施工，同时提供完整施工视频**

Professional engineers will provide on-site construction guidance at soonest possible, and also provide a complete construction video.

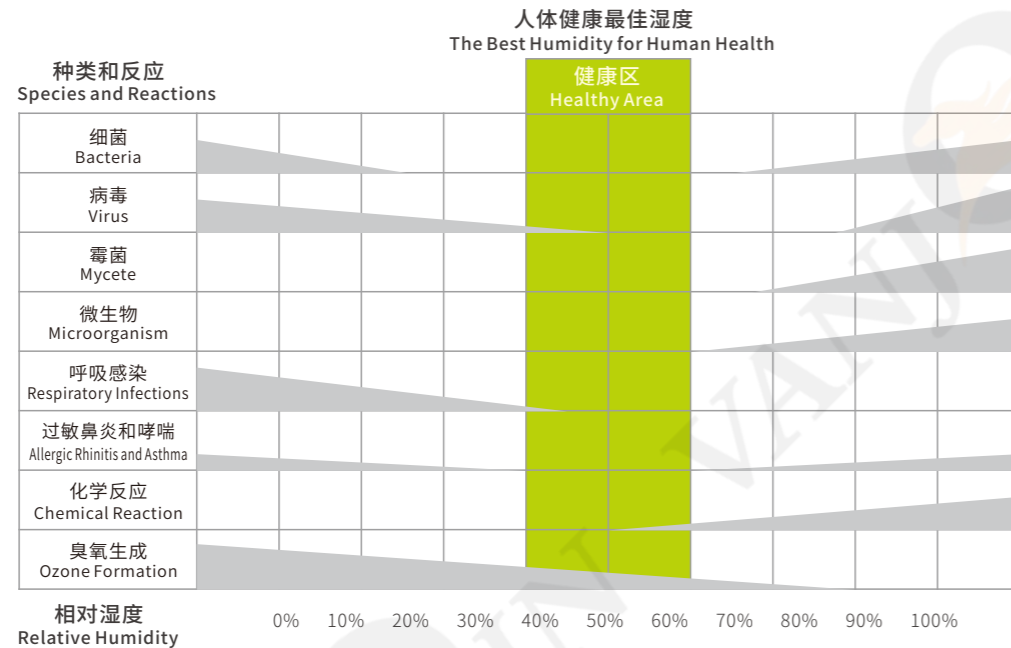
## 万卓生态软瓷与传统材料对比

|     | 石材             | 外墙砖                             | 涂料                               | 铝塑板                   | 万卓生态软瓷   |
|-----|----------------|---------------------------------|----------------------------------|-----------------------|--|
| 环保性 | 不环保<br>开山毁林    | 不环保<br>生产过程中<br>排放大量二<br>氧化碳、废渣 | 不环保<br>生产过程中<br>有污染排放,<br>产品甲醛污染 | 不环保<br>生产过程中<br>有污染排放 | 非常环保、零污染<br>原材料天然零污染,<br>生产过程无三废排放,<br>软瓷可循环利用 |
| 运输性 | 比较重,<br>运输成本较大 | 比较重,<br>运输成本较大                  | 特殊保护,<br>运输成本大                   | 运输成本大                 | 运输成本较低<br>产品轻质节能, 节<br>省成本                     |
| 安全性 | 不安全            | 不安全<br>有脱落等<br>安全隐患             | 安全                               | 不安全                   | 安全<br>轻薄, 粘贴牢固,<br>无高层脱落风险                     |
| 耐久性 | 耐久             | 耐久                              | 很差<br>容易褪色                       | 一般                    | 耐久<br>抗冻融, 耐老化,<br>百年如一                        |
| 防火性 | 防火             | 防火                              | —                                | 不防火                   | A1级防火  |
| 方便性 | 施工不方便          | 施工不方便                           | 施工方便                             | 施工不方便                 | 施工方便   |
| 表现力 | 仅是石材产品         | 表现力有限                           | 缺乏表现力                            | 缺乏表现力                 | 表现力非常丰富<br>仿石仿木仿皮仿金属<br>等都能实现                  |
| 光污染 | 较小             | 有                               | 无                                | 较大                    | 纹理自然, 无光污染                                     |

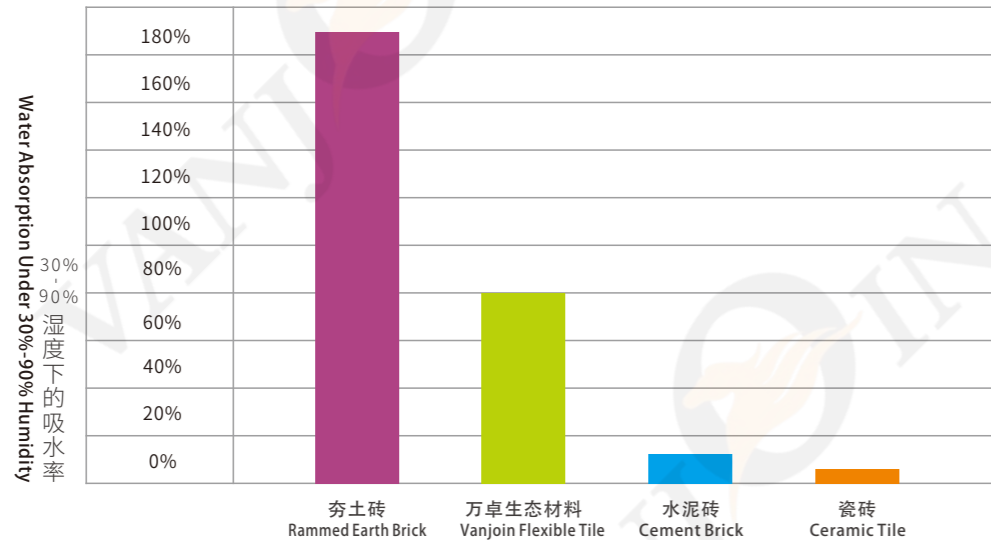
|                          | Stone                           | Exterior Wall Brick   | Coatings  | Aluminum Composite Plate               | Vanjoin Flexible Tile   |
|--------------------------|---------------------------------|---|---|--|---|
| Environmental Protection | Non-environmental Deforestation | Non-environmental Discharge lot of carbon dioxide and waste during production | Non-environmental Discharge pollutions with formaldehydeduring production | Non-environmental Discharge pollutions | Very environmental, zero pollution, natural raw material, no waste discharge & recyclable       |
| Transportation           | Heavy, high transportation cost | Heavy, high transportation cost   | Requiring special protection, high transportation cost                    | High transportation cost               | Low transportation cost, lightweight, energy-saving & cost saving                               |
| Safety                   | Unsafe                          | Unsafe, risk of falling off   | Safe  | Unsafe                                 | High safety, lightweight, thin, firmly installed, no risk of falling off for high-rise building |
| Durability               | Durable                         | Durable   | Poor, easy to fade  | Normal                                 | Durable, freeze-thaw resistance, anti-aging, Remain the same in a centenary                     |
| Fireproof                | Fireproof                       | Fireproof   | —   | No fireproof                           | Level A1 fireproof  |
| Convenience              | Uneasy construction             | Uneasy construction   | Easy construction   | Uneasy construction                    | Easy construction   |
| Appearance               | Only stone product              | Limited performance   | Lack of performance   | Lack of performance                    | Rich performance, imitation of stone, wood, dermatoglyphs, metal                                |
| Light Pollution          | Little                          | Yes   | No  | High                                   | No light pollution, natural texture   |



万卓生态软瓷生活健康指数



各种建筑材料在4mx4mx2.4m的房间内的湿度调节性能比较  
Comparison of Humidity Control Performance of Various Building Materials in a 4mx4mx2.4m Room.



Special Scene Application

# 特定场景应用

万卓生态软瓷工期快、样式多、安全性高  
在众多应用场景有不可替代的地位

With features of fast construction time, various styles and high security, Vanjoin Flexible Tile has an irreplaceable position in many application scenarios.



## 旧城改造 Old City Reconstruction

可直接在旧墙上改造且持久不脱落  
Renewal on the Old Wall Directly without Falling Off Prolonged.

上世纪80年代起,在“市场”的催化下,中国房地产行业快速形成和发展。1978-1998年间,多层住宅如雨后春笋般出现在全国各地,成为那个年代的建筑代表。虽然1998年以来中国房地产市场的发展进入新的阶段,小高层住房开始出现,但这些当时看起来高大、时尚的建筑在2017年的今天却显的十分落后和破败不堪,甚至很多还存在着安全隐患问题。

Since the 80's of last century, the real estate industry of China has developed rapidly under the catalysis of "Market". From 1978 to 1998, multi-storey residential buildings have sprung up all over the country and become a representative of that time. Although Chinese real estate market has entered into a new stage since 1988, small high-rise housing began to appear, which looked tall and fashionable, nowadays are very backward and dilapidated in 2017, even many of them have potential safety problems.

随着时间的推移,社会的发展,那些老旧的建筑将逐步走出历史的舞台,旧城改造已成为我们必须面对的问题。

As time goes by and the development of society, the old buildings will gradually be out of the stage of history, the renewal of the old city has become a problem we have to face.

2015年旧城改造面积约为5000万平米,2016年旧城改造面积达6000多万平米,并持续以20%的比例增长。这意味着大量的民房和老建筑需要并正在进行改造。

In 2015, the old city renovation area was about 50 million square meters, up to more than 60 million square meters in 2016, and continued to growing by an average of 20%. This means a large number of houses and old buildings are needed and are undergoing reconstruction.

旧瓷砖等旧墙面改造,其它材料无法实现饰面材料的持久不脱落,而万卓软瓷搭配专用粘剂可以实现,拥有了不可替代的特殊地位。万卓生态软瓷作为优质的外墙装饰新材料,不仅安全性高、运输成本低、施工快,并且对基层的要求低,对于水泥、瓷砖、石材、涂料、真石漆等各种基层都可以直接使用,减少了旧基层的铲除清理工作,极大的提高了旧城改造工程的效率。

Vanjoin Flexible Tile is superior new exterior decoration material with short production cycle, low transportation cost and fast construction. Besides, it can be used directly on cement basic layer, ceramic tile basic layer, stone basic layer, paint basic layer and lacquer basic layer. Therefore, it can reduce the cleaning work to eradicate the old base, and greatly improve the efficiency of the old city reconstruction project.



## 特色小镇 Characteristic Town

特色古韵完美呈现明清等建筑风格  
Featured ancient rhyme perfectly shows the architectural style of Qing and Ming dynasty.

2016年7月20日,中国住建部等三部委发布《关于开展特色小镇培育工作的通知》,计划到2020年,在全国培育1000个左右各具特色,富有活力的休闲旅游,商贸物流,现代制造,教育科技,传统文化,美丽宜居等特色小镇。

On July 20, 2016, China Ministry of Housing and Construction issued the Notice on the Cultivation of Characteristic Towns, indicating in China, there are about 1000 distinctive towns to be cultivated until 2020, such as dynamic leisure travel, trade logistics, modern manufacturing, education and technology, traditional culture, beautiful and livable and other characteristic towns.

《通知》明确,国家发改委等有关部门将支持符合条件的特色小镇建设项目申请专项建设基金,中央财政将对工作开展较好的特色小镇给予适当奖励。面对如此大的市场空间和政府的扶持计划,未来几年里特色小镇的建设将飞速推进。

"Notice" indicates that the National Development and Reform Commission and other relevant departments will support the qualified town with construction project, application for special construction funds, the central finance will encourage and reward the special town who has a better development. Faced with such a large potential market and government support plan, the construction of the characteristic towns will be rapidly developed in the next few years.

万卓生态软瓷款式多样,色彩丰富,可完美实现石材、瓷砖、陶土板、劈开砖、皮纹、实木等效果,具有极强的表现力。可满足各种不同风格特色小镇的特别选才需要,比如明清建筑、民国建筑、仿古做旧建筑等,达到没有做不到只有想不到的非凡效果。

With the features of various styles and colors, Vanjoin Flexible Tile can perfectly imitate stone, metal curtain wall, clay board, split brick, dermatoglyph, solid wood and other effects with strong performance. They can meet the special needs of different styles of towns' selection.



## 学校 School

永不脱落, 安全可靠  
Never Falling Off, Safe and Reliable



## 医院 Hospital

### 无辐射、无排放, 抗菌防霉

No Radiation, No Emission, Anti-bacterial & Anti-moldy

今日的学校安全稳定工作能否做得好, 直接关系到下一代能否健康成长, 关系到千家万户能否幸福, 关系到整个社会能否繁荣和稳定。

Today's school safety directly related to the healthy growth of the next generation, the well-being of millions of households, and the whole society can be related to prosperity and stability.



国家对校园建筑的安全问题高度重视, 已明令禁止墙面使用瓷砖饰面。而软瓷新材料自重轻、质地柔韧、永不脱落等特性在保证校园建筑美观大气的前提下, 充分解决了校园建筑落物风险问题, 更解决了政府、社会及家长最为关注的学生安全问题。同时万卓生态软瓷具有抗震、防火、防水、抗裂、耐撞击, 且施工周期短, 是当代校园建筑装饰的必选材料之一。

The state attaches great importance to the safety of the campus building, has banned the use of ceramic tile for wall decoration. The new material Vanjoin flexible tile is the ideal choice of modern campus decoration, with the outstanding features of lightweight, flexible, safe, anti-seismic, fire resistant, waterproof, anti cracking, impact resistant, and short construction period.

教育部公布的2015年全国高等学校名单。全国共有幼儿园22.37万所, 全国共有小学19.05万所, 全国共有初中学校5.24万所(含职业初中22所), 全国高中阶段教育共有学校2.49万所, 全国普通高等学校2560所, 普通高校中本科院校1219所, 因此学校建设软瓷需求量相当庞大。

The Ministry of Education announced the list of national colleges and universities in 2015. There are 223,700 kindergartens in the country, 190,500 primary schools, 52,400 junior schools (including 22 vocational junior high schools), a total number of 24,900 schools of the national high school education, 2560 ordinary colleges and universities in the country, 1219 of which are undergraduate colleges.

我国医院建设任务繁重, 不断上升的医疗需求, 使医院十分注重内外环境及设施的改造和完善。众多医院的改扩建工程正在实施中。随着医院建筑规模的增大, 医院建筑的安全问题也受到更高的重视。

More and more hospitals are pending to be constructed in China, people pay higher attention to the inner and outer environment and facilities now. Plenty of hospitals are under construction, the safety problem of hospital construction is highly concerned.

万卓生态软瓷以天然改性矿粉为主要原料, 以绿色植物纤维增强材料, 天然零污染, 无辐射无排放, 且具有防水抗菌防霉及A级防火等优良特性, 安全性能远远领先其他墙面装饰材料。

Vanjoin flexible tile adopts natural modified mineral powder as aggregates, green plant fiber as the reinforced materials. Vanjoin flexible tile has a lot of excellent performances like natural and zero pollution, no radiation, no release, waterproof, anti-bacteria, and fireproof to Level A1. It's much safer than other decoration materials.



## 商业街 Commercial Street

低成本实现高档效果  
Low Cost to Achieve High-end Effects

不同于早期单一的商场或集市，商业街是人流聚集的个主要场所。采用东西方向排列，以入口为中轴对称布局，建筑立面多采用塔楼，骑楼，雨罩的元素使空间产生新的划分，室内空间既设置了集中商业，又有零散店铺，是西方现代MALL与中国传统商铺的有机组合。

Different from the sole mall or bazaar in the early stage, commercial street is a major place for people to gather. It lays in East-west direction, and the symmetrical layout is on the center axis of entrance, the building facade is made a new division of space by towers, arcades, rain cover elements. Indoor space has set up a centralized business, but also scattered shops, which is organic combination of western modern malls and traditional Chinese shops.

随着城市的发展，国内各地都相继建成大规模商业中心，并仍在持续新建中。高高级的商业街更是会融入当地文化特色，进行主题商业街建设，如香港荷南美食区（英伦苏豪区翻版）、上海新天地（经典中的经典）、成都宽窄巷子（不一样的人生感悟）、佛山岭南天地（汇聚本土文化）……

With the development of the city, large-scale commercial centers have been built all over the country, and still continue to be built. High-level commercial street will be integrated into the local cultural characteristics, and build the commercial street with the theme, such as the Hong Kong Dutch Food District (The Replica of British Soho District ), Shanghai Xintiandi (The classic of classics), Chengdu Narrow Alley (Different life perception), Foshan Lingnan Tiandi (Gathering local culture together) .

很明显商业街建筑物的样式必须要十分贴合商业特色的主题，而面对种类多样的主题要求，各式风格、各种造型的建筑，怎么样的材料才能完美呈现出设计稿上的效果呢？

It is clear that the style of commercial street buildings must be fully fit for the theme of business characteristics. But when facing the requirements of various theme, all kinds of style and a variety of modeling of the building, which kind of building material can perfectly show the effect of the design?

万卓生态软瓷饰面装饰材料质地柔韧，能很好的贴合异形墙面，色彩丰富、样式多可充分满足各不同主题造型需求，并且运输便利，施工成本低，安装便捷，在大型商业中心的建设中广泛使用。

Vanjoin Flexible Tile facing decorative materials has flexible texture, which can fit the shaped wall very well. Various colors and styles can meet the needs of different themes, and with features of convenient transportation, low construction costs, easy installation, it has been widely used by many large commercial centers.



## 酒店住宅等高层建筑 Hotel Residential and Other High-rise Buildings

持久耐用、易清洁，A1级防火更安全  
Durable, Easy to Clean, Level A 1 Fireproof and Safer

中国引领亚洲地区旅游及酒店行业的快速发展，且商务休闲收入增长势头强劲。中外酒店品牌继续扩张其营业版图，截至2012年，全国住宿餐饮企业近330万家，全国住宿企业超过28万家。

China led rapid development of Asia's tourism and hotel industry, with a strong momentum growth of business and leisure income. Chinese and foreign hotel brands continue to expand its business domain. By the end of 2012, accommodation catering enterprises in the country has being nearly 3.3 million, the accommodation enterprises is more than 280,000.

随着人们生活水平的不断提高、酒店行业竞争的不断加剧，人们对酒店装饰装修的要求也越来越高，安全、美观的同时还要有特色。在考虑安全问题的情况下，传统瓷砖及天然石材被逐步禁止使用，而真实漆及涂料等墙面装饰材料并不能满足这一需求，万卓生态软瓷质地柔韧、样式丰富、有良好的防火、隔音、抗震等性能，另外材料运输便捷、费用低，施工速度快，逐步成为了当代的酒店住宅装饰材料的不二选择。

With the continuous improvement of people's living standards and the intensified competition in the hotel industry, people have higher and higher requirements for hotel decoration, which should not only be safe and beautiful but also unique. In consideration of safety issues, traditional ceramic tiles and natural stones are banned gradually, and materials such as real paints and coatings cannot meet this requirement. Vanjoin ecological soft tile has flexible shapes, rich styles, and good fire resistance, sound insulation, earthquake resistance and other properties. Besides, the flexible tile is convenient and cheap to transport, and fast to install. It has gradually become the only choice for contemporary hotel and residential decoration material.

# 功能性软瓷 Functional Flexible Tiles



## 1 Inclusion of valuable negative oxygen ions

Release certain negative oxygen ions automatically like being in the forest

No. WT2017B03F00238G1 Page 2 of 2

| No. | Test Items     | Test results | Test condition   |
|-----|----------------|--------------|--|
| 1   | Blank chamber  | 190          | test chamber 1m <sup>3</sup> , unplaced sample, test the air anion concentration in the test chamber after 2 hours.                                |
|     | Sample chamber | 186300       | Place 48 (240mm*60mm) samples (lay it flat on the bottom of the test chamber), test the air anion concentration in the test chamber after 2 hours. |

(blank below)



## 2 Anti-bacterial mold

Inhibit bacterial growth and provide natural containment for your family

for Building Materials  
Test Report

No. WT2017B01A02757 Page 2 of 2

| No. | Test Items           | Test results                       |
|-----|----------------------|------------------------------------|
| 1   | Bacterial resistance | Staphylococcus aureus (%)<br>100.0 |
|     |                      | Escherichia coli (%)<br>100.0      |

(blank below)



## 3 Infrared emission

The far infrared rays released by the product can provide healthcare at home

and Industry Galvanothermy Product Quality  
Test report

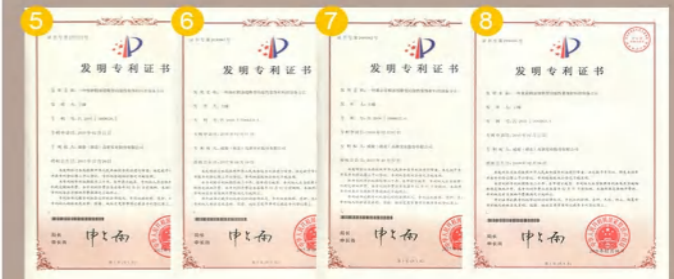
No. (2017)WT-HW-00868 Page 2 of 4

| No. | Test Items            | Requirements of Standard | Test results             | Individual conclusion | Remarks |
|-----|-----------------------|--------------------------|--------------------------|-----------------------|---------|
|     | Normal full emittance | ≥0.85                    | 0.88                     | Passed                |         |
|     | Spectral emissivity   | /                        | see the attached diagram | /                     |         |

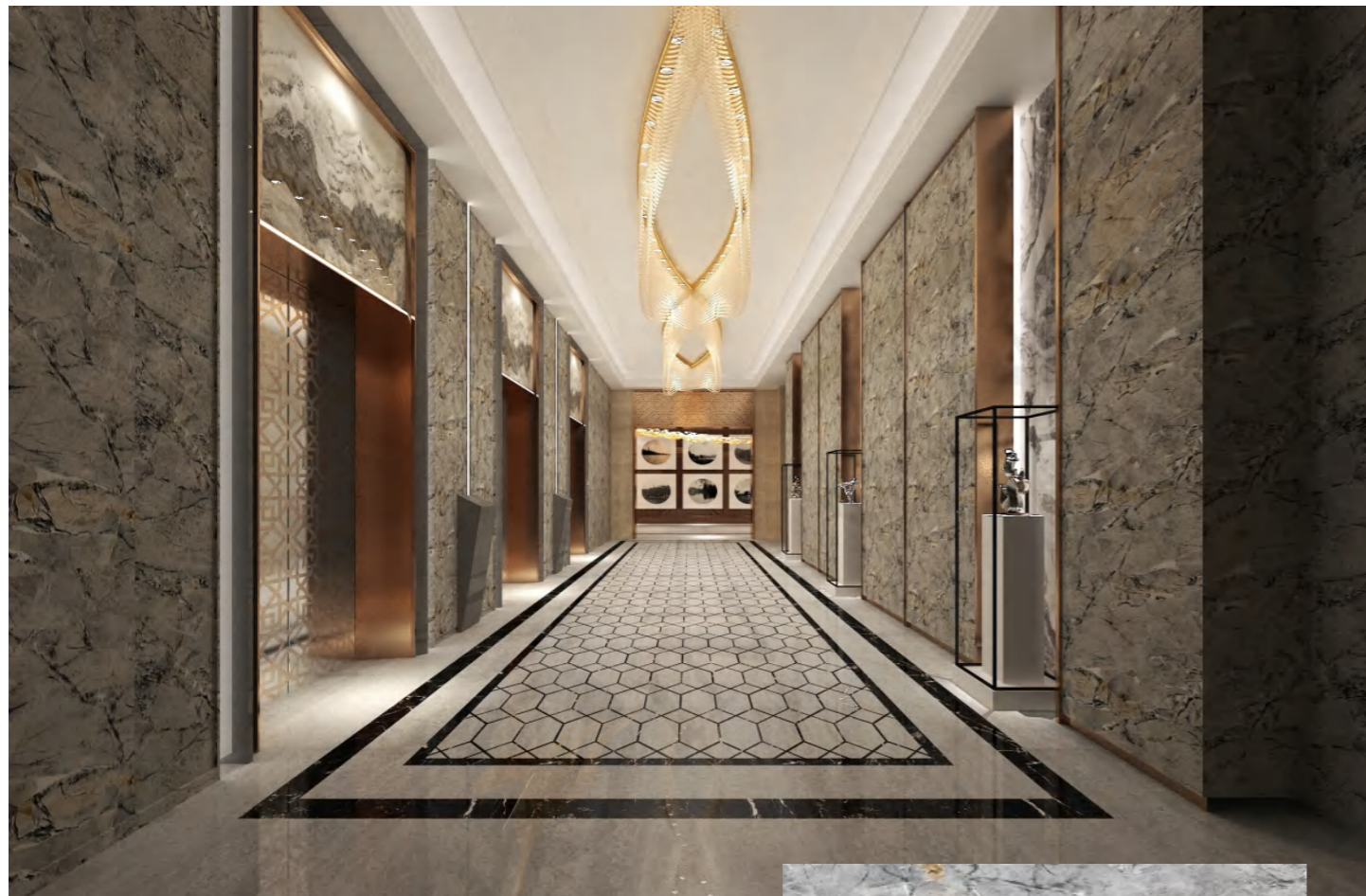
(blank below)

## 4 Functional Series that Mosquito Repellent

It contains pesticides, pesticides does this by creating a "spatial repellent barrier" that stops mosquitoes from entering people's homes, or drives them out again before they suck blood.



- 5 Eucalyptus Essential Oil
- 6 Cinnamon Essential Oil
- 7 Lavender Essential Oil
- 8 Jasmine Essential Oil



私人定制  
Private Custom-made Series

新款  
New Style



002



私人定制  
Private Custom-made Series

新款  
New Style



003



200



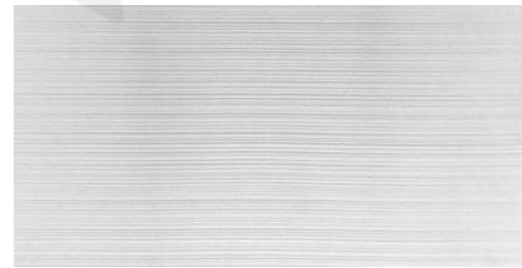
014



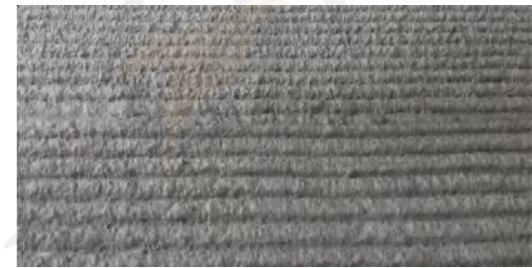
Chiseled Stone



Tile Groove Stone



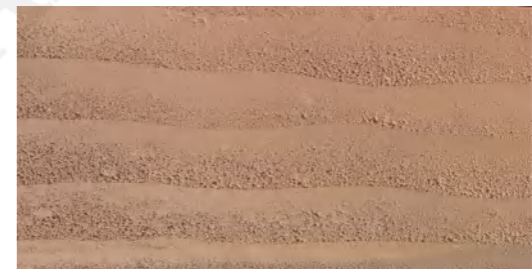
Line Stone



Crisscross Stone



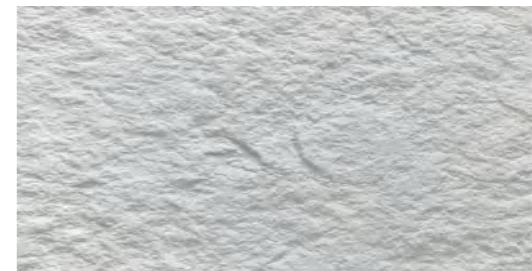
Concrete Slab



Rammed Earth Tile



Big Size Split Brick



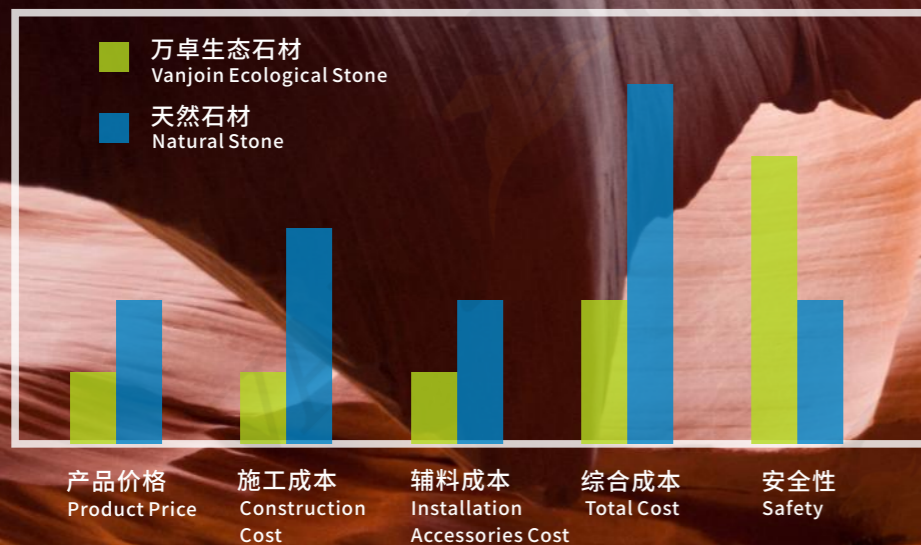
Star Moon Stone

ECOLOGICAL STONE SERIES

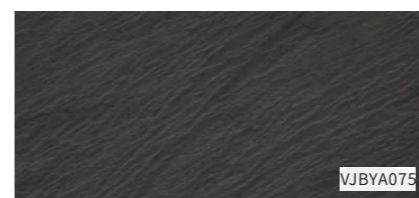
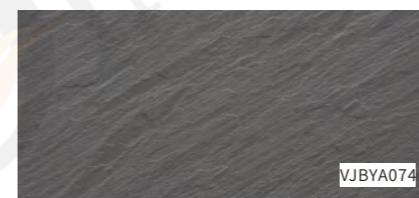
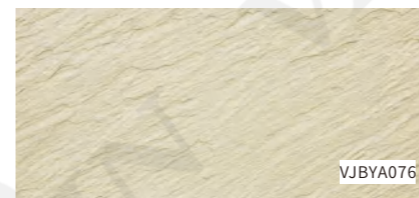
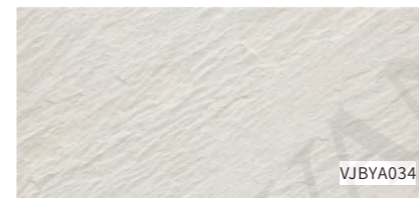
# 生态石材系列

具有天然石材的形状和质感，  
不开山劈石，也能完美还原自然原石的风貌。

With the shape and texture of natural stone, it can perfectly restore the natural stone style without exploiting mountain.



## 智利板岩A款 / Chile Slate A



### 产品说明: Product Description

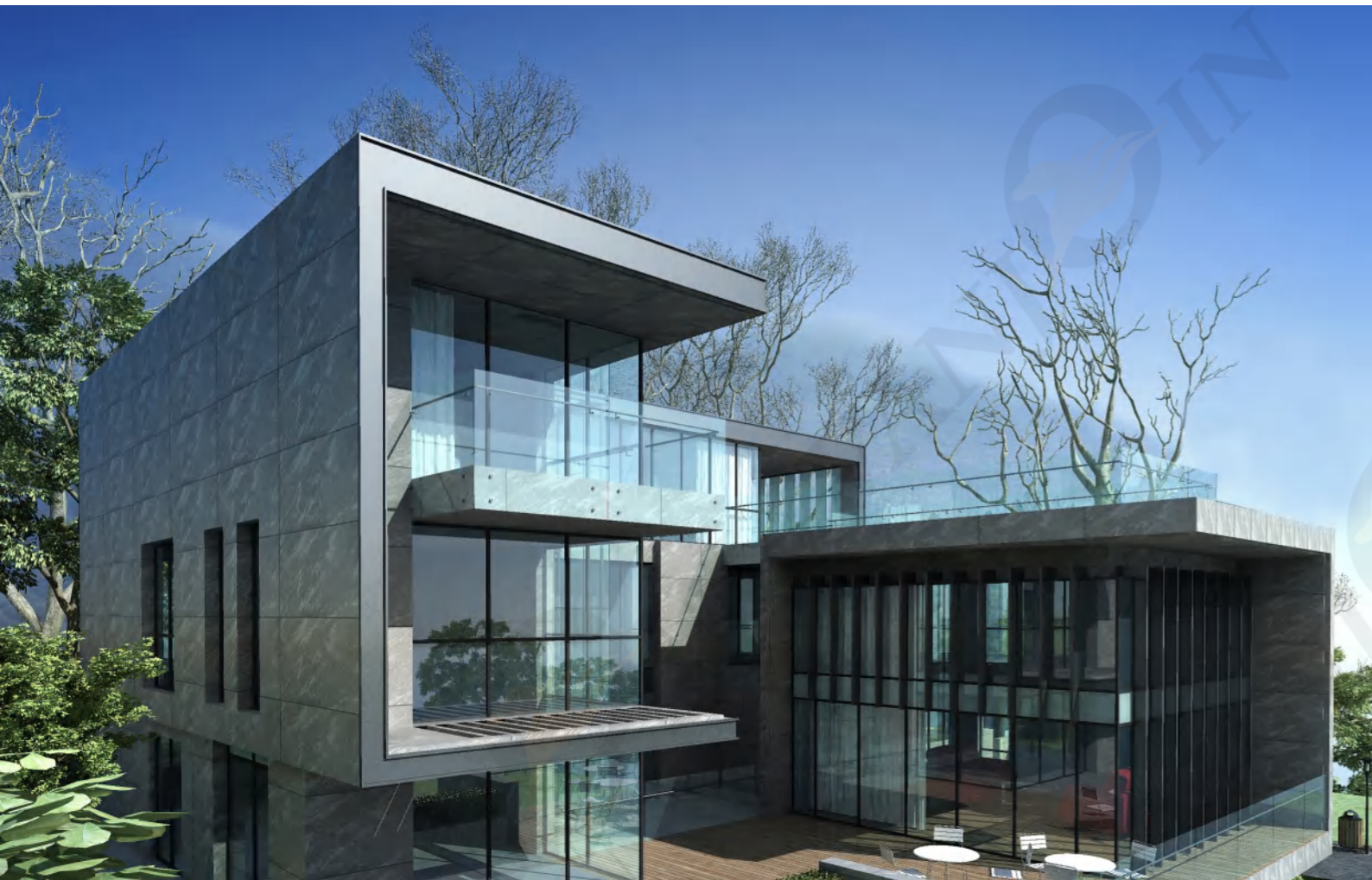
来自于大自然的灵感，渲染出纯净原始的美。板岩面纹理独特，纯美的质感营造出一种简洁而不简单的高雅气质。

Inspired by nature and featuring primitive beauty, the slate is characterized by special grain and fine texture, delivering an elegant temperament, concisely but not plainly.

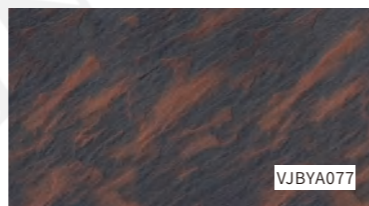
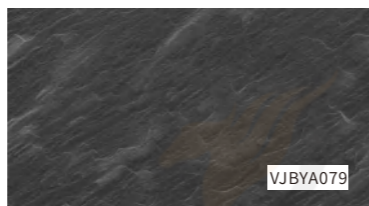
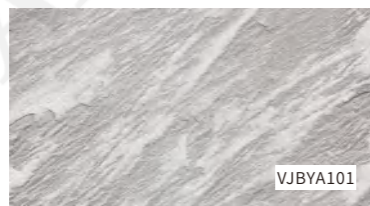
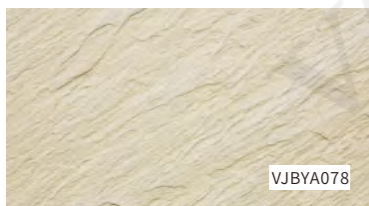
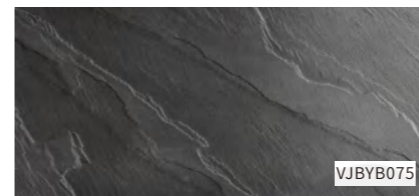
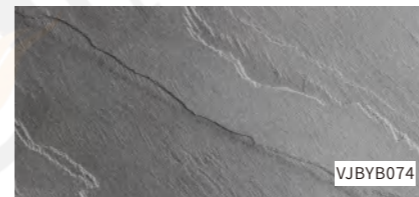
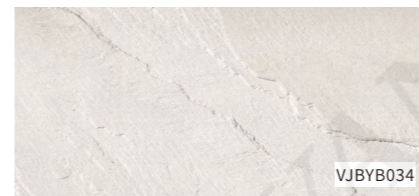
### 包装信息: Packing Details

| 常备规格mm<br>Normal Size | 外包装尺寸mm<br>Package Size | PC / Box | M <sup>2</sup> / Box | KG / Box |
|-----------------------|-------------------------|----------|----------------------|----------|
| 580x280x(2.5-3.3)     | 600x310x150             | 30       | 4.87                 | 19-22    |
| 580x580x(2.5-3.3)     | 600x600x90              | 20       | 6.73                 | 26-30    |





## 智利板岩B款 / Chile Slate B



### 产品说明: Product Description

纹理自然，色泽浑厚，犹如天然石材般的质感，适用于建筑外墙、室内装饰、艺术墙面等多种场合。

Natural texture and lustre, just like natural stone, suitable for various occasions such as exterior wall, interior wall decoration, artistic wall and so on.

### 包装信息: Packing Details

| 常备规格mm<br>Normal Size | 外包装尺寸mm<br>Package Size | PC / Box | M <sup>2</sup> / Box | KG / Box |
|-----------------------|-------------------------|----------|----------------------|----------|
| 580x280x(2.5-3.3)     | 600x310x150             | 30       | 4.87                 | 19-22    |
| 580x580x(2.5-3.3)     | 600x600x90              | 20       | 6.73                 | 26-30    |



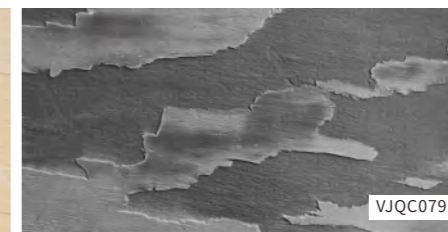
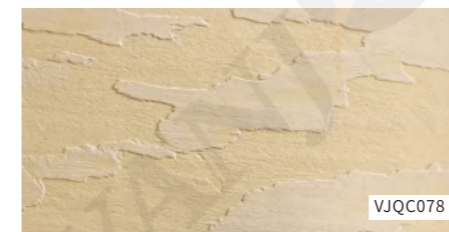
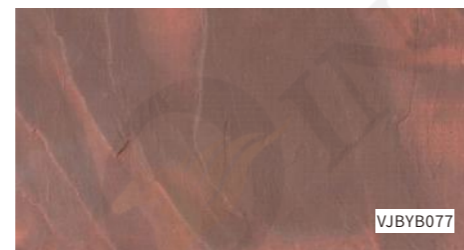
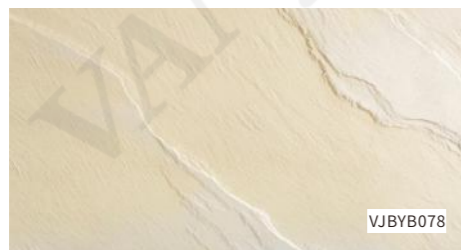
## 千层岩 / Pancake Rock

包装信息:  
Packing Details

色彩纯正，质感细腻，悠然轻松的氛围中给人一种自然原始、神秘浪漫的感觉。

Being pure in color, smoothly in texture, this rock presents a feeling of natural primitivism and mysterious romance with the relaxing and leisure atmosphere.

| 常备规格mm<br>Normal Size | 外包装尺寸mm<br>Package Size | PC / Box | M <sup>2</sup> / Box | KG / Box |
|-----------------------|-------------------------|----------|----------------------|----------|
| 580x280x(2.5-3.3)     | 600x310x150             | 30       | 4.87                 | 19-22    |
| 580x580x(2.5-3.3)     | 600x600x90              | 20       | 6.73                 | 26-30    |



## 堪培拉砂岩 / Canberra Sandstone



### 产品说明: Product Description

空间的设计简约大方，轻盈灵动，隽永如斯，彰显时代感，充分体现了追逐时尚的设计理念。

The design of the room is simple, flexible and durable, with a strong sense of times and a designing idea of fashion-capturing.

### 包装信息: Packing Details

| 常备规格mm<br>Normal Size | 外包装尺寸mm<br>Package Size | PC / Box | M <sup>2</sup> / Box | KG / Box |
|-----------------------|-------------------------|----------|----------------------|----------|
| 580x280x(2.5-3.3)     | 600x310x150             | 30       | 4.87                 | 19-22    |
| 580x580x(2.5-3.3)     | 600x600x90              | 20       | 6.73                 | 26-30    |

## 罗马洞石 / Roman Travertine



### 产品说明: Product Description

还原天然洞石的外貌，自然的洞眼设计，兼具抗污自洁功能，让您感受到返璞归真的视觉效果。

One hundred percent restoration to the genuine appearance of the crude travertine, coupled with natural design of the hole featuring pollutant-resistant and self-cleaning functions, can definitely give you an authentic visual effect.

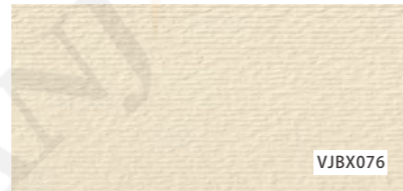
### 包装信息: Packing Details

| 常备规格mm<br>Normal Size | 外包装尺寸mm<br>Package Size | PC / Box | M <sup>2</sup> / Box | KG / Box |
|-----------------------|-------------------------|----------|----------------------|----------|
| 580x280x(2.5-3.3)     | 600x310x150             | 30       | 4.87                 | 19-22    |
| 580x580x(2.5-3.3)     | 600x600x90              | 20       | 6.73                 | 26-30    |

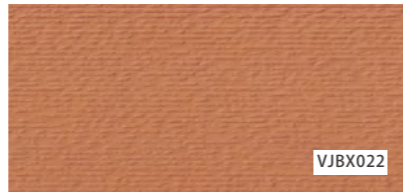
## 波西米亚岩 / Bohemia Slate



VJBX034



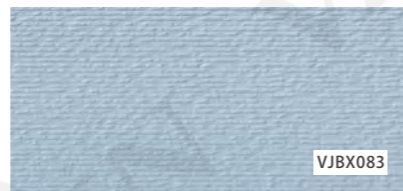
VJBX076



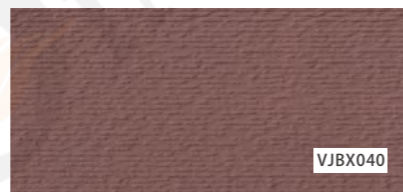
VJBX022



VJBX058



VJBX083



VJBX040

### 产品说明 Product Description

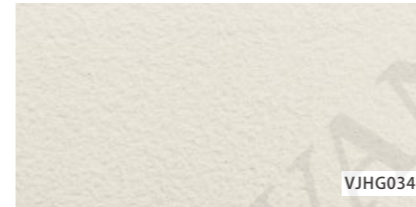
色彩艳丽，纹理自然，可组合拼贴出色彩斑斓极具异域风情的墙面，也可单色使用营造温馨典雅的氛围。

With gorgeous color and fluent grain, this sort of slate can be pieced into an exotic wallpaper, or be used alone to construct a warm and elegant atmosphere.

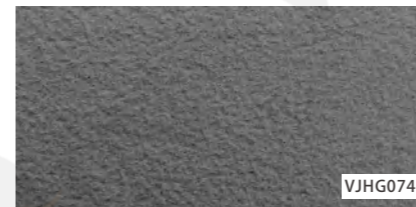
### 包装信息 Packing Details

| 常备规格mm<br>Normal Size | 外包装尺寸mm<br>Package Size | PC / Box | M <sup>2</sup> / Box | KG / Box |
|-----------------------|-------------------------|----------|----------------------|----------|
| 580x280x(2.5-3.3)     | 600x310x150             | 30       | 4.87                 | 19-22    |
| 580x580x(2.5-3.3)     | 600x600x90              | 20       | 6.73                 | 26-30    |

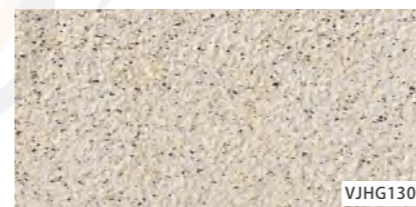
## 华山花岗岩 / Mount Hua Granite



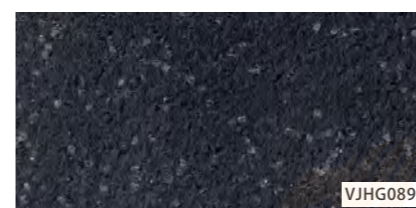
VJHG034



VJHG074



VJHG130



VJHG089



VJHG134



### 产品说明: Product Description

质感原始粗糙，面纹丰富，深浅不一，营造完美氛围，彰显建筑品位。

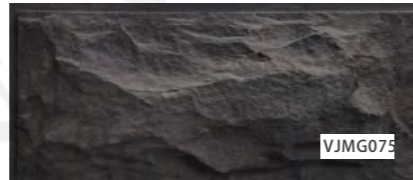
### 包装信息: Packing Details

With crude texture, abundant grains being irregular in depth, Mount Hua Granite can give your building a perfect impression, and raise your project to a higher level.

| 常备规格mm<br>Normal Size | 外包装尺寸mm<br>Package Size | PC / Box | M <sup>2</sup> / Box | KG / Box |
|-----------------------|-------------------------|----------|----------------------|----------|
| 580x280x(2.5-3.3)     | 600x310x150             | 30       | 4.87                 | 19-22    |
| 580x580x(2.5-3.3)     | 600x600x90              | 20       | 6.73                 | 26-30    |



## 埃及蘑菇石 / Egypt Mushroom Stone



### 产品说明: Product Description

凹凸随机起伏体现自然风貌，看似厚重，实际轻巧。感受自然本质的同时，彰显雅致生活。

The random concave-convex design reveals the feature of nature, seemingly solemn while virtually light. It facilitates your approach to natural essence and gives manifestation to elegant lifestyle.

### 包装信息: Packing Details

| 常备规格mm<br>Normal Size | 外包装尺寸mm<br>Package Size | PC / Box | M <sup>2</sup> / Box | KG / Box |
|-----------------------|-------------------------|----------|----------------------|----------|
| 600x300x(10.05-15.0)  | 700x700x1050            | 104      | 18.72                | 530-600  |
| 400x200x(10.0-15.0)   | 500x500x1050            | 104      | 8.32                 | 250-300  |

## ECOLOGICAL ARTISTIC STONE SERIES 生态艺术石系列

具有天然石材的形状和质感，也有艺术加工的雕琢痕迹，不损害自然的同时，尽显艺术的魅力。

With the shape and texture of natural stone, also with the traces of artistic processing, while showing the charm of art without damaging the nature.



产品价格 Product Price    施工成本 Construction Cost    综合成本 Total Cost    表现力 Performance    安全性 Safety



## 南岛岁月痕 / Vicissitude Stone in South Island

### 产品说明: Product Description

艺术与生活的完美结合，整体感质朴至诚，面纹丰富，深浅不一，恰似岁月轻抚的痕迹。

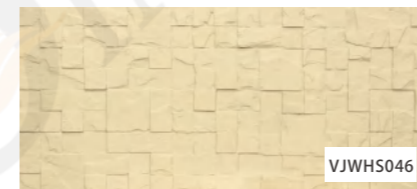
It stands for the perfect combination of art and life, with the plain texture, abundant grains that are irregular in depth, disclosing the sense of vicissitude.



### 包装信息: Packing Details

| 常备规格mm<br>Normal Size | 外包装尺寸mm<br>Package Size | PC / Box | M <sup>2</sup> / Box | KG / Box |
|-----------------------|-------------------------|----------|----------------------|----------|
| 580x280x(6.0-10.0)    | 600x310x150             | 16       | 2.6                  | 23-26    |
| 580x580x(6.0-10.0)    | 600x600x90              | 10       | 3.36                 | 30-34    |

## 罗马文化石 / Roman Cultural Stone



### 产品说明: Product Description

简单的高低厚度设计，在光与影的追逐中，尽显艺术的魅力。

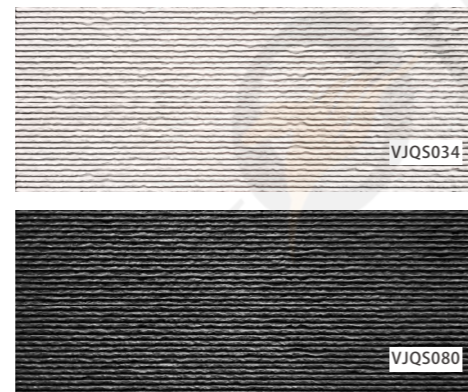
Against the backdrop of light and shadow, the simple design featuring different levels of thickness vigorously demonstrates the charm of art.

### 包装信息: Packing Details

| 常备规格mm<br>Normal Size | 外包装尺寸mm<br>Package Size | PC / Box | M <sup>2</sup> / Box | KG / Box |
|-----------------------|-------------------------|----------|----------------------|----------|
| 580x280x(6.0-10.0)    | 600x310x150             | 16       | 2.6                  | 23-26    |
| 580x580x(6.0-10.0)    | 600x600x90              | 10       | 3.36                 | 30-34    |



## 清水岩 / Clear Water Rock

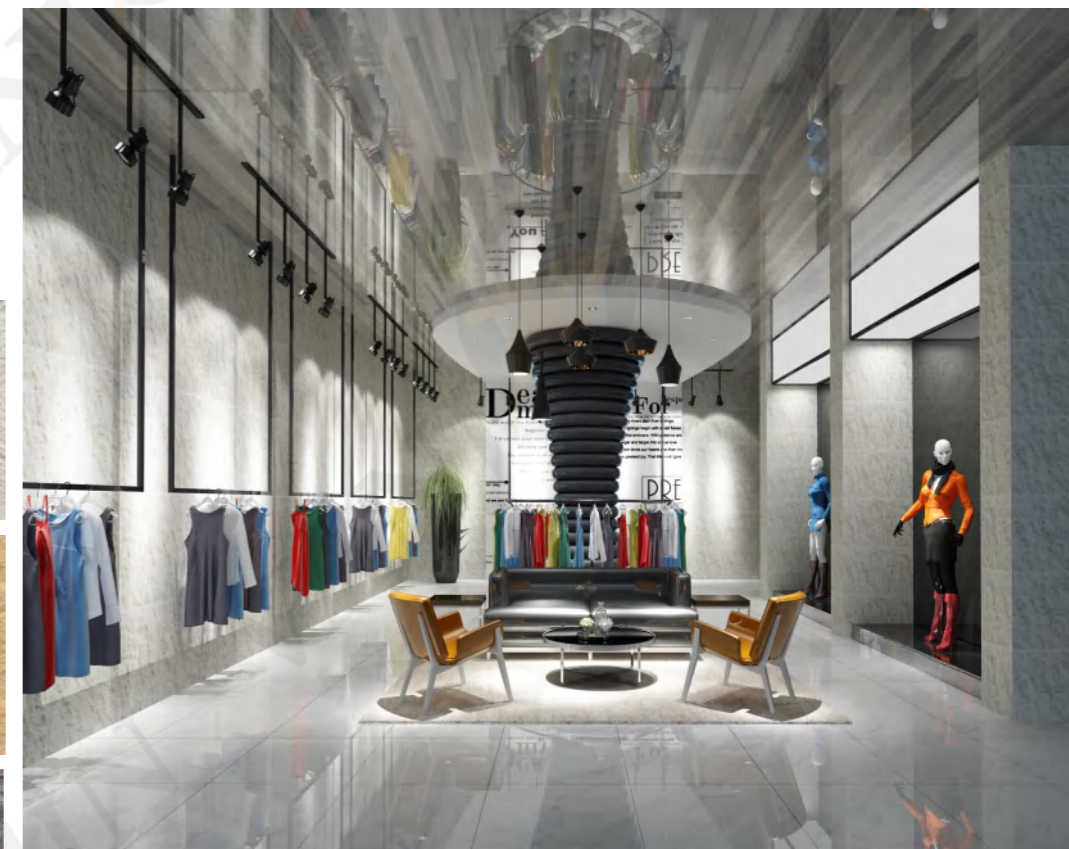
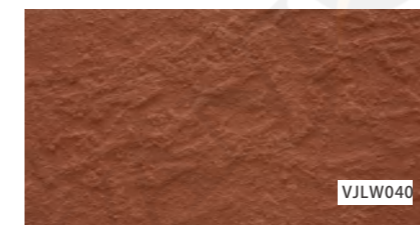
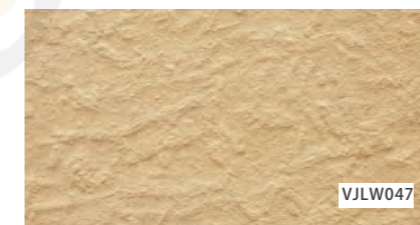
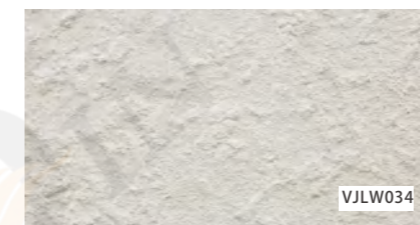


## 婺源龙尾岩 / Wuyuan Dragon Tail Slate

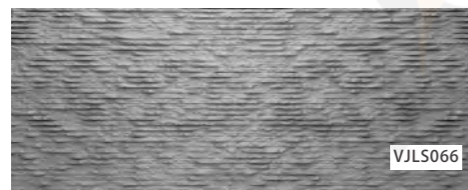
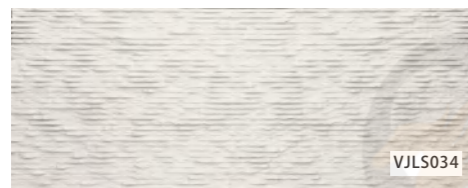
### 产品说明: Product Description

毛面石材的质感，凹凸不一的肌理，天然不规则的外观，年代感的设计独具吸引力。

Its attraction is characterized by the frosted and concave-convex texture, naturally irregular shape, and design filled with a sense of period.



## 流水石 / Flowing Stone



### 包装信息: Packing Details

### 包装信息 / Packing Details

| 常备规格mm<br>Normal Size | 外包装尺寸mm<br>Package Size | PC / Box | M <sup>2</sup> / Box | KG / Box |
|-----------------------|-------------------------|----------|----------------------|----------|
| 580x280x(6.0-8.0)     | 600x310x150             | 20       | 3.25                 | 23-26    |

| 常备规格mm<br>Normal Size | 外包装尺寸mm<br>Package Size | PC / Box | M <sup>2</sup> / Box | KG / Box |
|-----------------------|-------------------------|----------|----------------------|----------|
| 580x280x(6.0-10.0)    | 600x310x150             | 16       | 2.6                  | 23-26    |
| 580x580x(6.0-10.0)    | 600x600x90              | 10       | 3.36                 | 30-34    |

## 八达岭条石 / Badaling Strip Stone



### 产品说明: Product Description

具有天然石材的形状和质感，色泽纹路保持自然原石的风貌，将石材的内涵与艺术展现无遗。

With the shape and texture of the crude stone material, its color and glaze retains the feature of natural stones, thoroughly revealing the content and artistic sense of the stone.

### 包装信息: Packing Details

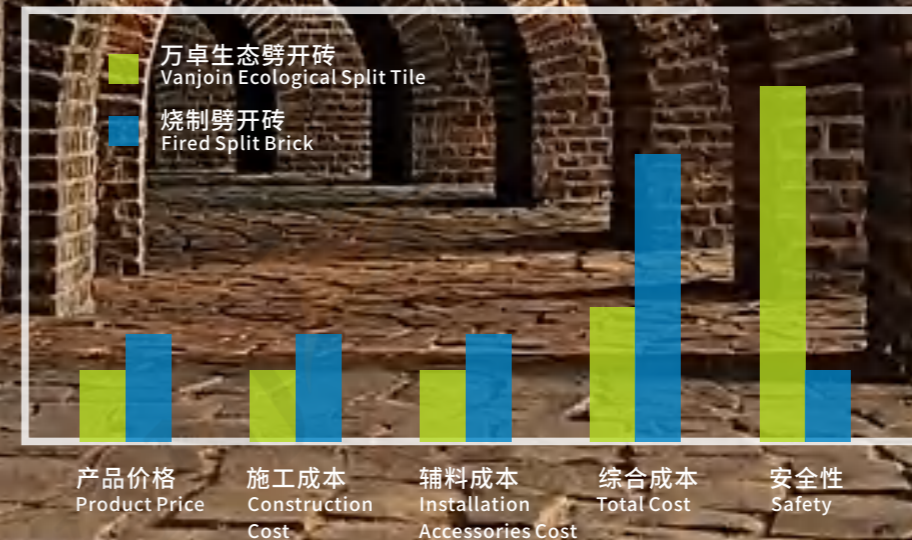
| 常备规格mm<br>Normal Size | 外包装尺寸mm<br>Package Size | PC / Box | M <sup>2</sup> / Box | KG / Box |
|-----------------------|-------------------------|----------|----------------------|----------|
| 580x280x(6.0-10.0)    | 600x310x150             | 16       | 2.6                  | 23-26    |
| 580x580x(6.0-10.0)    | 600x600x90              | 10       | 3.36                 | 30-34    |

## ECOLOGICAL SPLIT TILE

# 生态劈开砖系列

面状肌理与传统煅烧的土窑砖一般无二，呈现出自然烧制的面貌，用出众的配色增添时尚感，品位不凡。

The facial texture is similar to the traditional calcined clay kiln, showing a natural burning face; superior color matching added the fashion sense and manifesting uncommon taste.







## 汉韵唐风老砖面

Old Brick Surface Featuring Charm of the Han Dynasty and Fashion of the Tang Dynasty

面状肌理，就像经历过风雨的侵蚀一样，虽粗糙不平，但具有独特的艺术感染力。

Just like having been eroded by wind and rain, its surface and texture, though rough and uneven, boasts particular artistic charm.

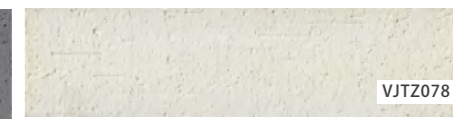


## 汉韵唐风土砖面

Clay Brick Surface Featuring Charm of the Han Dynasty and Fashion of the Tang Dynasty

### 包装信息 Packing Details

| 常备规格mm<br>Normal Size | 外包装尺寸mm<br>Package Size | PC / Box | M <sup>2</sup> / Box | KG / Box |
|-----------------------|-------------------------|----------|----------------------|----------|
| 240x60x(2.5-3.3)      | 520x260x155             | 400      | 5.76                 | 22-26    |





## 汉韵唐风火山面

Volcano Surface Featuring Charm of the Han Dynasty and Fashion of the Tang Dynasty



VJHS033



VJHS006



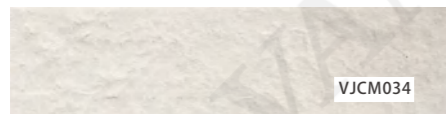
VJHS004



VJHS077

## 汉韵唐风糙面

Rough Surface Featuring Charm of the Han Dynasty and Fashion of the Tang Dynasty



VJCM034



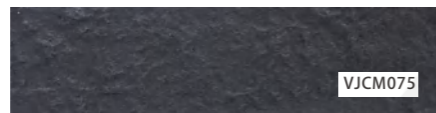
VJCM078



VJCM066



VJCM058



VJCM075



VJCM079



VJCM033



VJCM006



VJCM004



VJCM077



VJHS034



VJHS066



VJHS058



VJHS075





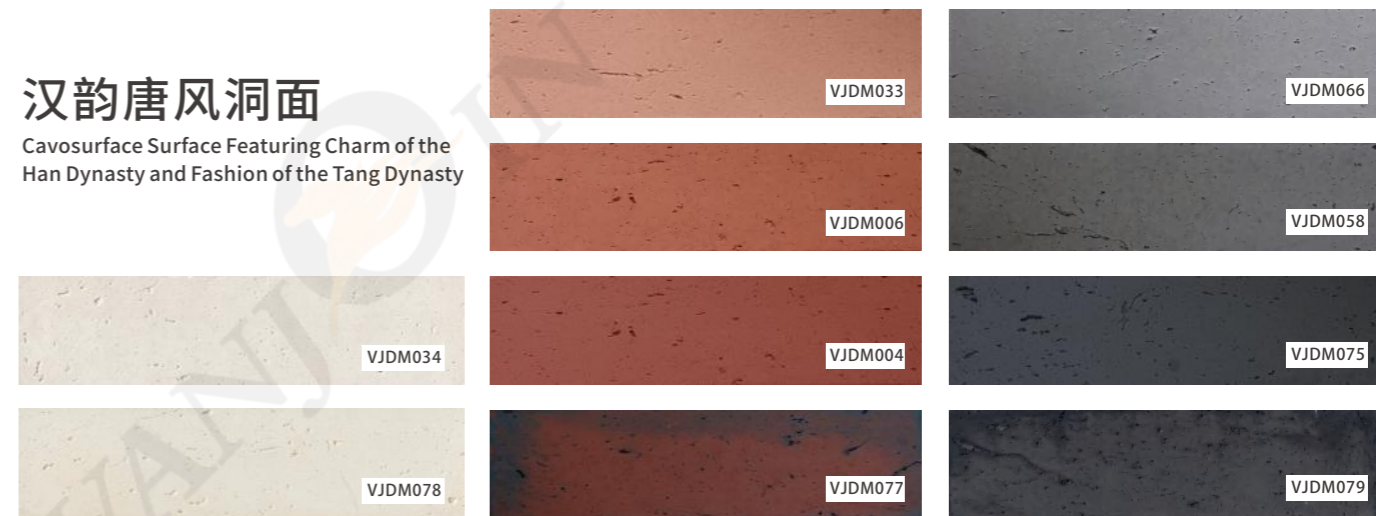
## 汉韵唐风毛面

Hairy Surface Featuring Charm of the Han Dynasty and Fashion of the Tang Dynasty



## 汉韵唐风洞面

Cavosurface Surface Featuring Charm of the Han Dynasty and Fashion of the Tang Dynasty

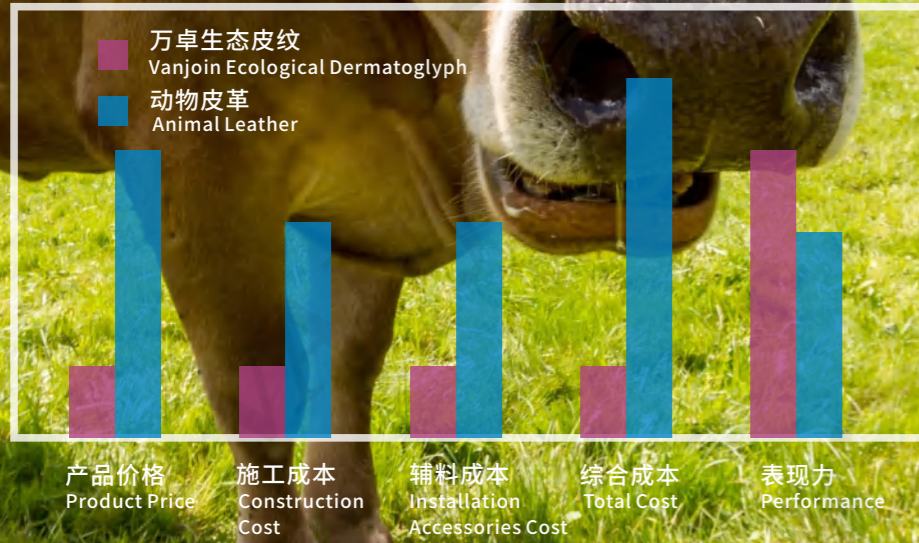


ECOLOGICAL DERMATOGLYPH SERIES

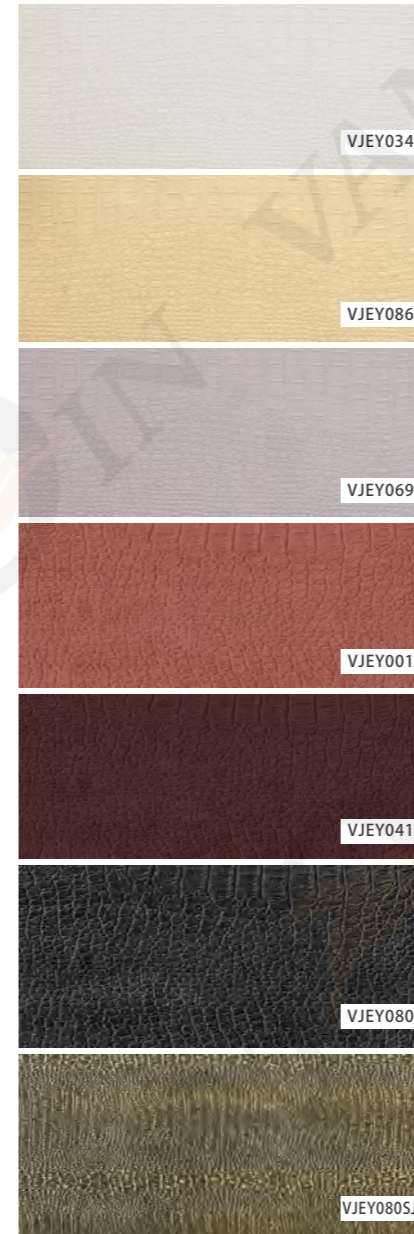
# 生态皮纹系列

高贵奢华的皮纹面饰，  
不需残忍猎杀也能拥有。

Noble and luxurious leather face decoration  
can get it without hunting and killing animals cruelly.



## 澳洲湾鳄鱼皮纹 / Australian Bay Crocodile Dermatoglyph



### 产品说明: Product Description

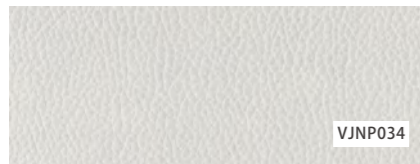
来源于世界珍稀动物澳洲淡水鳄的设计灵感，奢华的质感，即使不残忍猎杀，也能以环保的材料制作而成。

Inspired by the Australian freshwater crocodile, a kind of rare animal all over the world, this kind of dermatoglyph owns luxurious texture, which proves that the best product can be made from environmental materials, no need to hunt and kill animals cruelly.

### 包装信息: Packing Details

| 常备规格mm<br>Normal Size | 外包装尺寸mm<br>Package Size | PC / Box | M <sup>2</sup> / Box | KG / Box |
|-----------------------|-------------------------|----------|----------------------|----------|
| 580x280x(2.5-3.3)     | 600x310x150             | 30       | 4.87                 | 19-22    |
| 580x580x(2.5-3.3)     | 600x600x90              | 20       | 6.73                 | 26-30    |

## 意大利牛皮纹 / Italian Cow Dermatoglyph



VJNP034



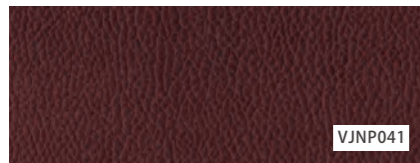
VJNP086



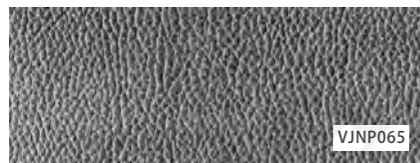
VJNP069



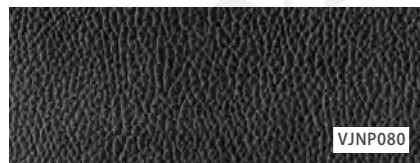
VJNP001



VJNP041



VJNP065



VJNP080



### 产品说明: Product Description

面纹粗而均匀, 优雅。与奢华的家居饰品相得益彰, 彰显大家风范, 贵族气质。

The broad, even and elegant surface grains perfectly suit the luxurious home decoration, demonstrating the generous charm and noble temperament.

### 包装信息: Packing Details

| 常备规格mm<br>Normal Size | 外包装尺寸mm<br>Package Size | PC / Box | M <sup>2</sup> / Box | KG / Box |
|-----------------------|-------------------------|----------|----------------------|----------|
| 580x280x(2.5-3.3)     | 600x310x150             | 30       | 4.87                 | 19-22    |
| 580x580x(2.5-3.3)     | 600x600x90              | 20       | 6.73                 | 26-30    |



## 麻韵 Flax Charm

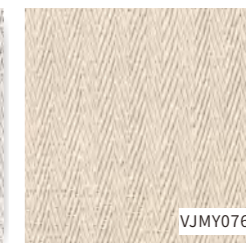
拥有天然编织物的纹理质感, 不经意间流露出淡淡的复古情怀。  
With natural fabric texture, inadvertently revealed a touch of retro feelings.

### 包装信息: Packing Details

| 常备规格mm<br>Normal Size | 外包装尺寸mm<br>Package Size | PC / Box | M <sup>2</sup> / Box | KG / Box |
|-----------------------|-------------------------|----------|----------------------|----------|
| 580x280x(6.0-10.0)    | 600x310x150             | 16       | 2.6                  | 23-26    |
| 580x580x(6.0-10.0)    | 600x600x90              | 10       | 3.36                 | 30-34    |



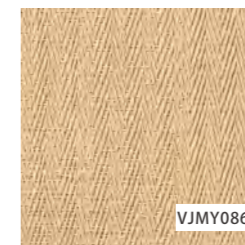
VJMY034



VJMY076



VJMY046



VJMY086



VJMY022



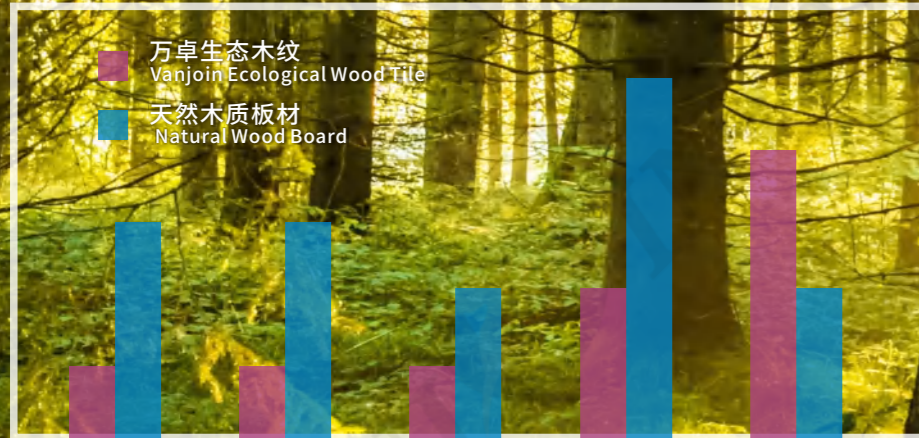
VJMY040

ECOLOGICAL WOOD GRAIN SERIES

# 生态木纹系列

拥有树木原始的纹理和质感，  
却不砍伐任一片林、任一棵树。

Own the original texture and texture of trees,  
but not cut any forest or any tree.



产品价格  
Product Price

施工成本  
Construction Cost

辅料成本  
Installation Accessories Cost

综合成本  
Total Cost

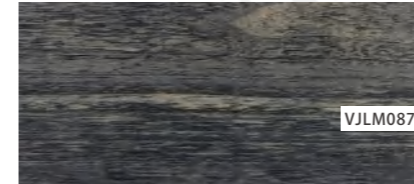
安全性  
Safety



VJLM088



VJLM077



VJLM087

## 美洲栎木 / American Oak

### 产品说明: Product Description

树木的纹理清晰可见，色泽柔和，体现了树木最原始的面貌，不用抛光，不用上漆，抗污自洁，健康环保。

Trees' texture could be clearly seen, soft color, reflecting the most primitive appearance of trees, no polishing, no painting, dirt resistant and self-cleaning, healthy and environment friendly.

### 包装信息: Packing Details

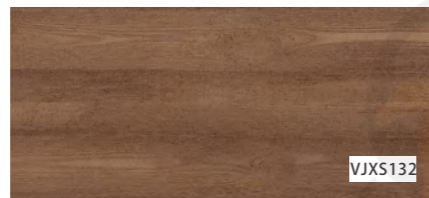
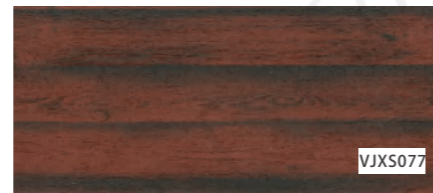
| 常备规格mm<br>Normal Size | 外包装尺寸mm<br>Package Size | PC / Box | M <sup>2</sup> / Box | KG / Box |
|-----------------------|-------------------------|----------|----------------------|----------|
| 1165x140x(2.5-3.3)    | 1250x355x465            | 200      | 33.76                | 150-160  |



## 北欧雪松 Nordic Cedar

色泽深沉厚重，犹如天然木历经数百年而不朽的精神，不用抛光，不用上漆，抗污自洁，健康环保。

Deep color, like immortal spirit of natural wood going through hundreds of years, without polishing and painting, dirt resistant and self-cleaning, environment friendly and healthy.



## 非洲鸡翅木 Africa Wenge Wood

依稀可见树的年轮，纹理细致，色泽柔和，完美的展现了木制品应有的面貌，不用抛光，不用上漆，抗污自洁，健康环保。

Faint tree ring could be seen, fine texture, soft color, perfectly showing the original appearance of wooden products, no polishing, no painting, dirt resistant and self-cleaning, healthy and environment friendly.



# 威骏绿色墙体系统:软瓷+板材

Vanjoin Green Wall System: Flexible Tile + Wall Panel



万卓生态软瓷，可以直接利用我们特有的粘合剂粘贴在威骏轻质板材上，从而形成一套完整的绿色墙体系统，为您提供一站式解决方案。

Vanjoin Flexible Tile can be directly pasted by our special adhesive to Vanjoin Lightweight Sandwich Panels, which formed a complete green wall system to provide you one-stop solution.

其安装简单快捷。无浪费，无污染，无繁复的安装流程，免去昂贵的安装费用和长久的安装

时间。您将会在最短的时间内获得环保，安全又漂亮的建筑。

The installation is simple and fast. No wastage, no pollution, no complicated installation procedures, no expensive construction cost, and no long construction time. You can just obtain an eco-friendly, safe, and beautiful building in soonest time.

您的满意是我们的目标。我们一直致力于为您提供最好的绿色节能墙体解决方案。

Your satisfaction is our mission. We are dedicated to providing best green energy saving wall system solution to you.





## INSTALLATION PROCESS

### 安装流程

#### 施工程序

/Construction Procedure

- 1 基层处理  
Basic Treatment
- 2 试排、弹线  
Trial place, flip line
- 3 批刮粘接剂至墙面上呈梳形状  
Scraping the adhesive to the wall as a comb shape
- 4 产品背面批刮薄层粘结剂  
Scraping thin layer of adhesive on the back of the product
- 5 粘贴产品：挪压、对线、压平、刷缝  
Paste Products: Move press, on-line, flatten, brush seam
- 6 采用专用勾缝剂嵌缝  
Using special grouts caulking
- 7 成品清理、养护  
Finished products cleaning, conservation

#### 施工辅料

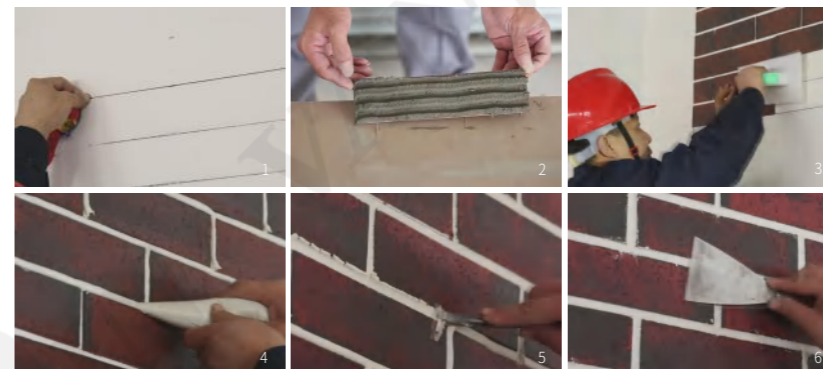
/Construction Accessories



Vanjoin 软瓷粘结剂  
Flexible Tile Adhesive

#### 万卓生态软瓷劈开砖类施工流程示范

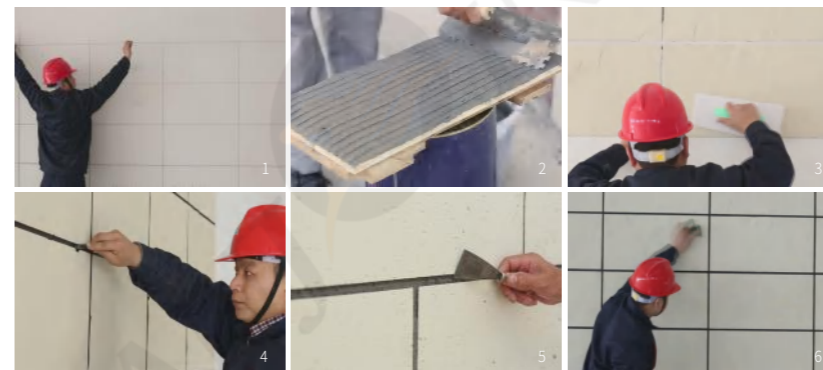
Construction Method of Vanjoin Flexible Tile - Split Bricks Series



- 1) 基层处理后, 弹线定位。
  - 2) 用小铲刀将调好的万卓软瓷粘结剂在产品背后刮浆, 浆厚2-3mm, 满浆率须达80%以上。产品边缘部分不要放过多浆料, 利于手拿, 以免污手。
  - 3) 双手上下均匀挪压产品, 调整缝宽, 让产品与墙体均匀接触, 用胶板拍打使其粘结均匀, 严禁用手指按压。
  - 4) 填缝, 可用勾缝剂或硅酮胶填满所有缝。
  - 5) 勾缝, 在勾缝剂或硅酮胶半干时, 用配套的勾缝钢筋条来拉缝, 拉出的缝要深凹、饱和、光滑。
  - 6) 清洁墙面, 用铲刀去除溢出的勾缝剂, 并用干海绵擦拭干净。
- 1) After primary treatment, setting line for positioning.
  - 2) Use sawtooth trowel to scrape prepared Vanjoin Flexible Tile adhesive onto the back of the tile, slurry thickness 2-3mm, full slurry ratio must be more than 80%. Please do not put too much slurry at tile edges, easy for hands to carry and avoid to dirty hands.
  - 3) Move up and down evenly of the tile with both hands, adjust the seam width, make the tile can uniformly contact with the wall, and tapping it with rubber plate to make the adhesive uniform. Pressing with fingers is not allowed.
  - 4) Filling, using Vanjoin Flexible Tile pointing agent or silicone rubber to fill all the seams.
  - 5) Pointing, when pointing agent or silicone rubber is semi-dry, use the matching pointing steel bar to pull the joints, the joints should be deep, saturated and smooth.
  - 6) Cleaning the wall surface, using shovel to eradicate the pointing agent, then use dry sponge to remove the ashes.

#### 万卓生态软瓷石材类施工流程示范

Construction Method of Vanjoin Flexible Tile - Stone Materials Series



- 1) 基层处理后, 弹线定位
  - 2) 用锯齿镭刀在墙面刮抹2-3mm厚万卓软瓷粘结剂粘结层, 宽度以臂长为易。
  - 3) 上下均匀挪压产品, 调整缝宽, 用胶板拍打使其粘结均匀
  - 4) 等粘结剂半干时, 用钢筋条勾缝
  - 5) 溢出的粘结剂待其半干时用小铲刀铲掉
  - 6) 用干海绵对其表面灰尘污渍进行清理
- 针对万卓软瓷石材类, 也可借鉴劈开砖施工方法, 采取在产品背后刮浆粘贴, 并采用勾缝剂或硅酮胶填缝。
- 1) After basic level processing, setting line for positioning.
  - 2) Use the sawtooth trowel to scrape 2-3mm thick Vanjoin Flexible Tile adhesive onto the wall, and the width is best within your arm length.
  - 3) Move up and down evenly of the tile with both hands, adjust the seam width, and tapping it with rubber plate to make the adhesive uniform.
  - 4) After adhesive is semi-dry, use the steel bar to point joints.
  - 5) For the overflow adhesive, when it is semi-dry, using a shovel to take it out.
  - 6) Using a dry sponge to remove the ashes.
- For Vanjoin Flexible Tile - Stone Materials Series, also can use the split brick construction method, scrape and paste on the back of the tile, and use pointing agent or silicone rubber for joints filling.

#### 施工工具 Construction Tools



铁毛刷 Iron Brush

墨斗盒 Chalk Line Reel

塑料抹泥板 Plastic Claying Board

网格布 Fiberglass Mesh

灰桶 Ash Bucket

## 万卓生态软瓷皮类施工流程示范

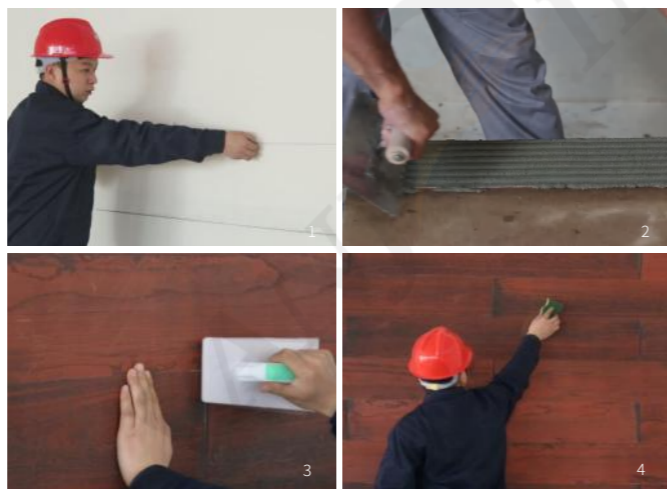
Construction Method of Vanjoin Flexible Tile  
- Dermatoglyph Series



- 1) 基层处理后, 弹线定位
  - 2) 用锯齿镟刀将调好的万卓软瓷粘结剂在产品背后刮浆, 浆厚2-3mm。保证满浆率在80%以上。产品边缘部分不要放过多浆料, 利于手拿, 以免污手。
  - 3) 双手上下均匀挪压产品, 调整缝宽, 让产品与墙体均匀接触, 用胶板拍打使其粘结均匀, 严禁用手指按压。
  - 4) 填缝, 可用勾缝剂或硅酮胶填满所有缝, 或清缝后使用免钉胶粘结不锈钢条修饰缝隙。
  - 5) 勾缝, 在勾缝剂或硅酮胶半干时, 用配套的勾缝钢筋条来拉缝, 拉出的缝要深凹、饱和、光滑。如使用不锈钢条则等免钉胶干透后撕去其表面覆膜。
  - 6) 用干海绵对其表面灰尘污渍进行清理。
- 1) After primary treatment, setting line for positioning.
  - 2) Use the sawtooth trowel to scrape prepared Vanjoin Flexible Tile adhesive onto the back of the tile, slurry thickness 2-3mm, full slurry ratio must be more than 80%. Please do not put too much slurry at tile edges, easy for hands to carry and avoid to dirty hands.
  - 3) Move up and down evenly of the tile with both hands, adjust the seam width, make the tile can uniformly contact with the wall, and tapping it with rubber plate to make the adhesive uniform. Pressing with fingers is not allowed.
  - 4) Filling, using Vanjoin Flexible Tile pointing agent or silicone rubber to fill all the seams full, or after cleaning seams, use free nail glue bonding stainless steel bar to decorate the seams.
  - 5) Pointing, when pointing agent or silicone rubber is semi-dry, use the matching pointing steel bar to pull the joints, the joints should be deep, saturated and smooth. If use the stainless steel bar, tear the surface film off after the free nail glue dried.
  - 6) Clean its surface dust with a dry sponge.

## 万卓生态软瓷木类施工流程示范

Construction Method of Vanjoin Flexible Tile - Wood Series



- 1) 基层处理后, 弹线定位。
  - 2) 用锯齿镟刀将调好的万卓软瓷粘结剂在产品背后刮浆, 浆厚2至3mm。保证满浆率在80%以上。产品边缘部分不要放过多浆料, 利于手拿, 以免污手。
  - 3) 双手上下均匀挪压产品, 调整缝宽, 让产品与墙体均匀接触, 用胶板拍打使其粘结均匀, 严禁用手指按压。
  - 4) 清缝, 溢出的粘结剂待其半干时用小平刀铲掉。
  - 5) 用干海绵对其表面灰尘污渍进行清理
- 1) After primary treatment, setting line for positioning.
  - 2) Use sawtooth trowel to scrape prepared Vanjoin soft ceramic tile adhesive onto the back of the tile, slurry thickness 2-3mm, full slurry ratio must be more than 80%. Please do not put too much slurry at tile edges, easy for hands to carry and avoid to dirty hands.
  - 3) Move up and down evenly of the tile with both hands, adjust the seam width, make the tile can uniformly contact with the wall, and tapping it with rubber plate to make the adhesive uniform. Pressing with fingers is not allowed.
  - 4) Clean joints, when the overflow adhesive is semi-dry, using a shovel to take it out.
  - 5) Clean its surface dust with a dry sponge.

## 海棠角处理方法

External Corner, Hitom Angle Processing



- 1) 做倒角处, 基层须平整。两端产品距离转角处留1-3mm距离, 方便勾缝。
  - 2) 用勾缝剂或者硅酮胶填缝。
  - 3) 用配套的勾缝钢筋条来拉缝, 拉出的缝要深凹、饱和、光滑。
  - 4) 溢出的勾缝剂或硅酮胶, 待其半干结时, 用小铲刀铲除。
  - 5) 用干海绵清理表面灰尘污渍。
- 1) For the chamfering place, basic level should be flat. Product both sides keep 1-3mm distance from the corner, convenient for pointing.
  - 2) Fill in the seams with pointing agent or silicone rubber.
  - 3) Use the matching pointing steel bar to pull the joints, the joints should be deep, saturated and smooth.
  - 4) For overflow pointing agent or silicone rubber, upon semi-dry, use the small shovel to eradicate.
  - 5) Use a dry sponge to remove the ashes.

## 45° 倒角处理方法

45° Chamfer Processing



- 1) 将要对接的两块软瓷产品, 用小砂轮机打出45°斜角
  - 2) 对接处粘结剂要填充实, 并用手将对接处产品均匀压实。
  - 3) 如接缝处有缝隙, 需用同色填缝剂修补严密。
  - 4) 待浆料干结后, 用砂轮机或同色产品, 打磨转角处, 使其更加光滑自然。
- 1) Use a small grinder to grind a 45° angle at the edges of two vanjoin flexible tile which are going to connect together.
  - 2) On connection place, adhesive should be fully filled, use hands to compact evenly two pieces products.
  - 3) If any seams in connection place, need to use same color sealant to fill to the full.
  - 4) After the slurry is dry, use a grinding wheel or same color product to grind the corners, and make them round and smooth.

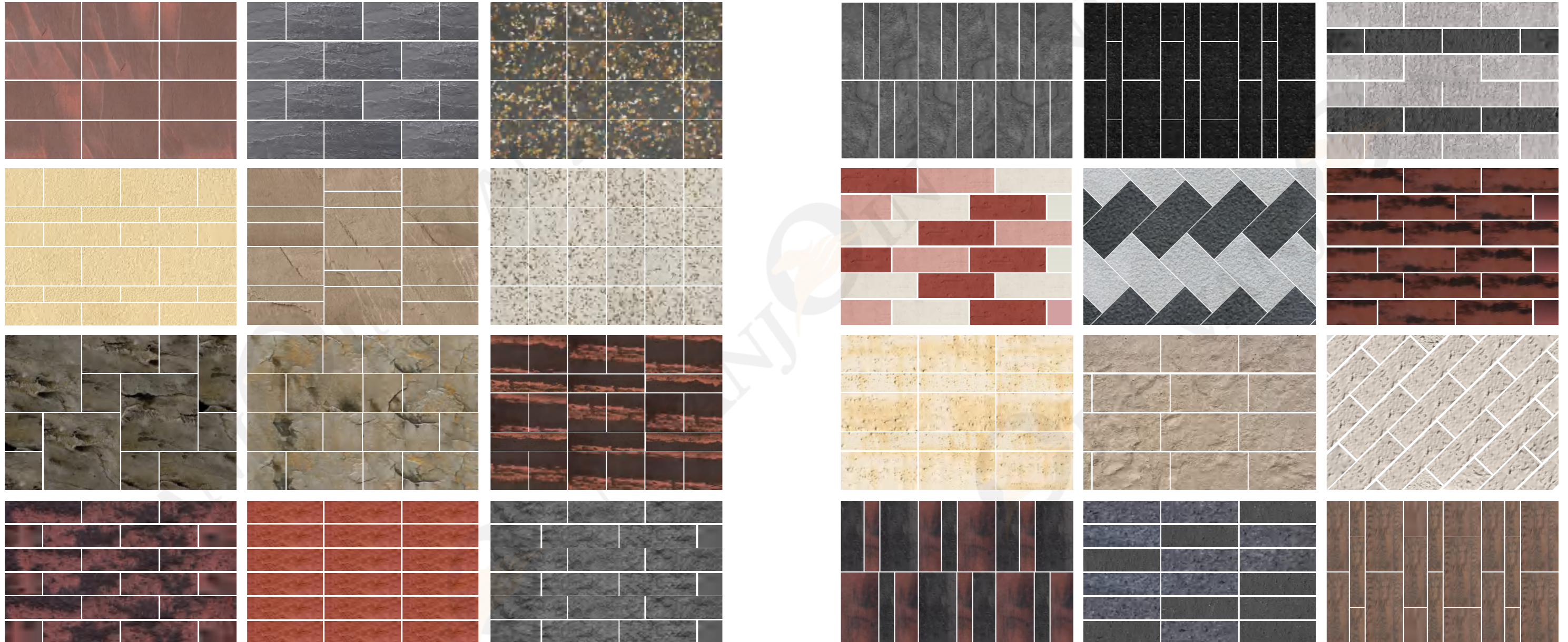
## 清洁与维护方法

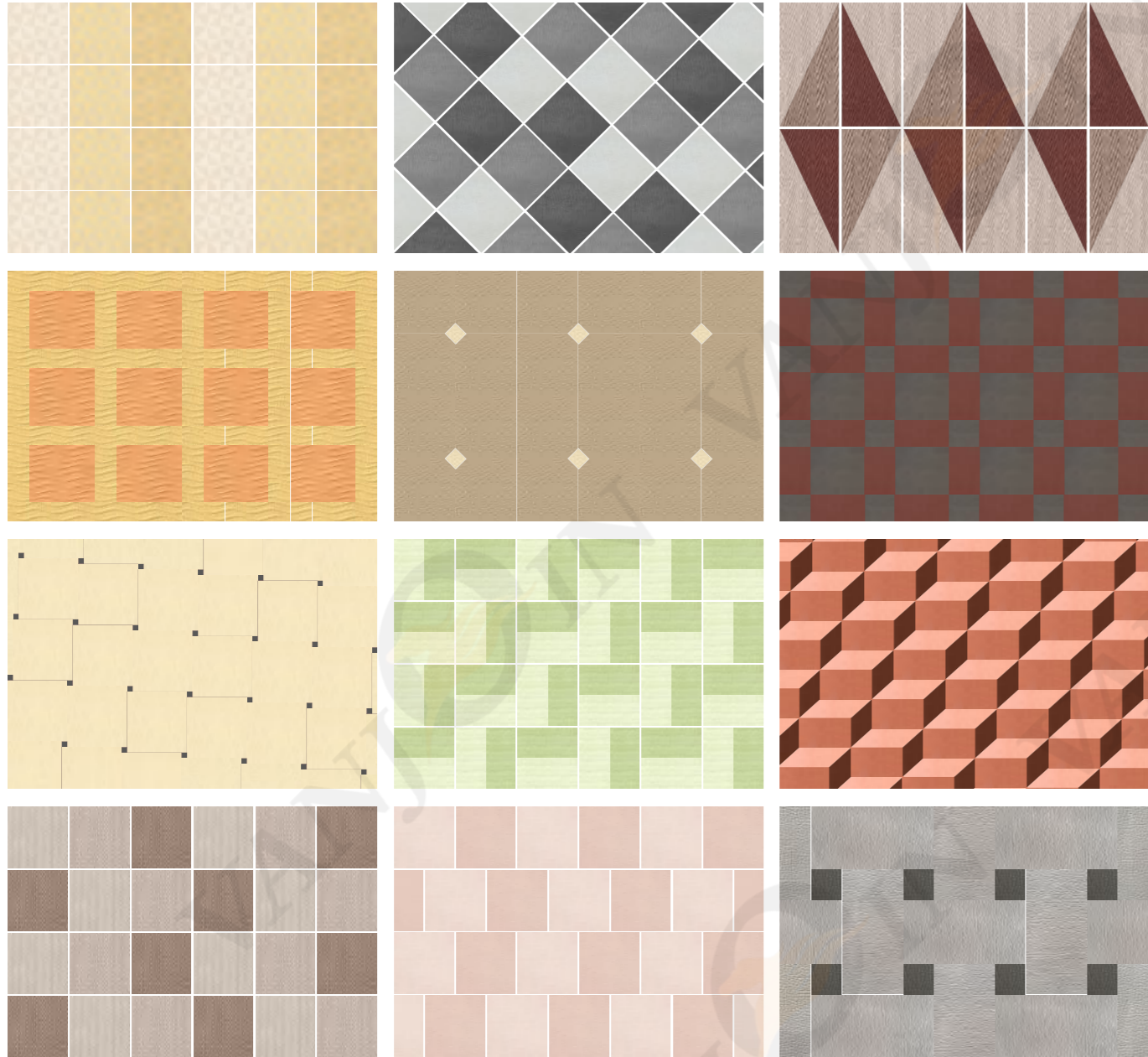
Cleaning and Maintenance Methods

- 1) 粘贴时, 工人必须保持双手干净。必须待其半干结时用刮刀刮除, 严禁湿擦。
  - 2) 当浆料或勾缝剂污染到手时, 严禁施工并立即清理双手, 产品被沾污时, 要待其半干时用铲刀及干海绵等清理, 切记不能用水清理。
- 1) Workers must keep their hands clean before pasting. If any slurry pollute the product surface, upon semi-dry, use the shovel to eradicate, wet rubbing is strictly prohibited.
  - 2) When slurry pollute your hands, please stop the construction and immediately wash your hands; if dirty the product, upon semi-dry, use the shovel and dry sponge to clear up. Cleaning by water is prohibited.

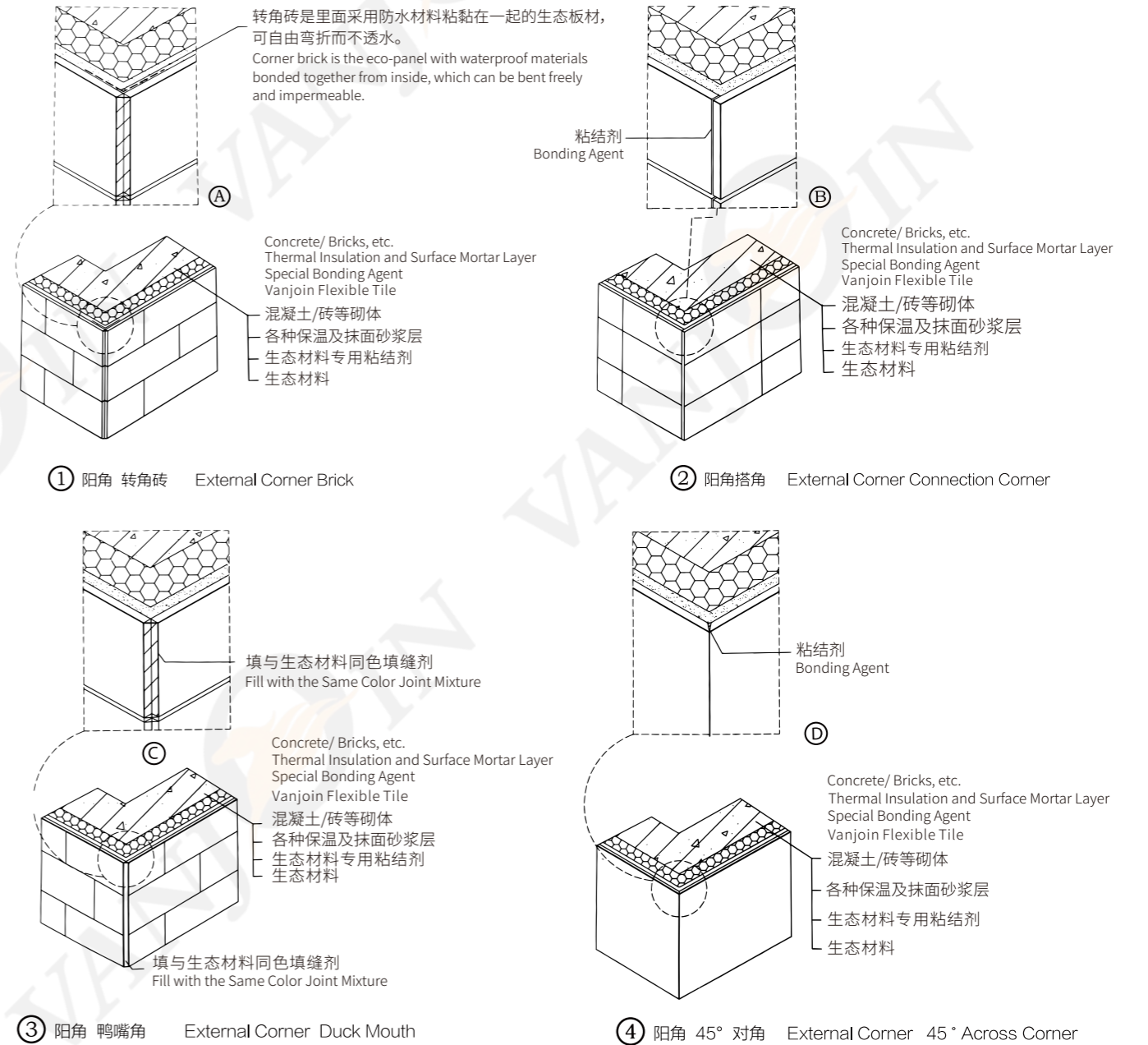
RECOMMENDED PAVING METHOD  
建议铺贴方式

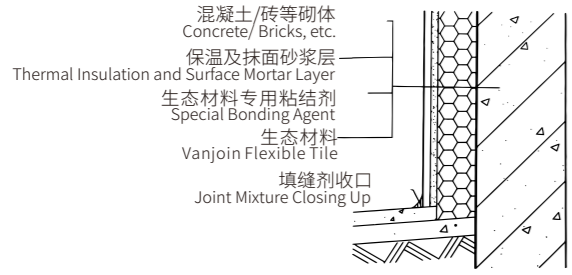
温馨提示:外墙铺贴需留缝5-8mm  
Warm Tips:For exterior wall paving, please leave a 5 to 8mm gap.





INSTALLATION NODE DIAGRAM  
安装节点图

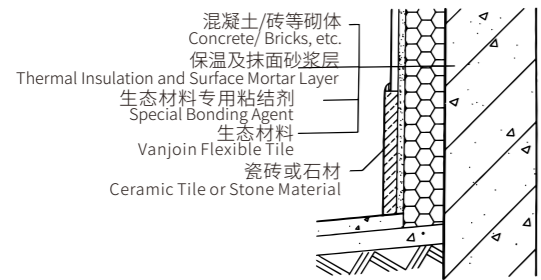




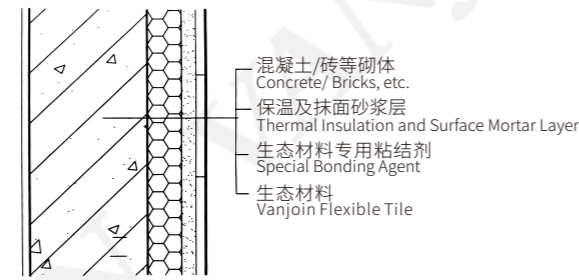
① 墙根收口 (填缝剂收口)  
Wall Foot Closing Up (Joint Mixture)



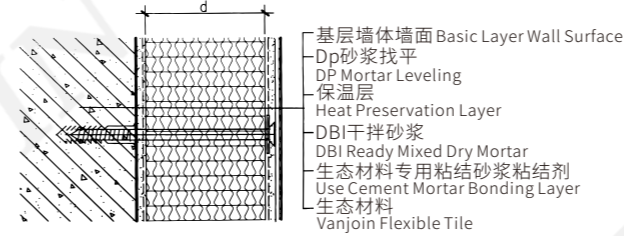
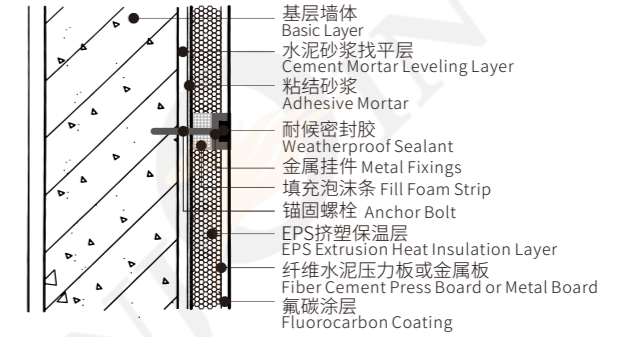
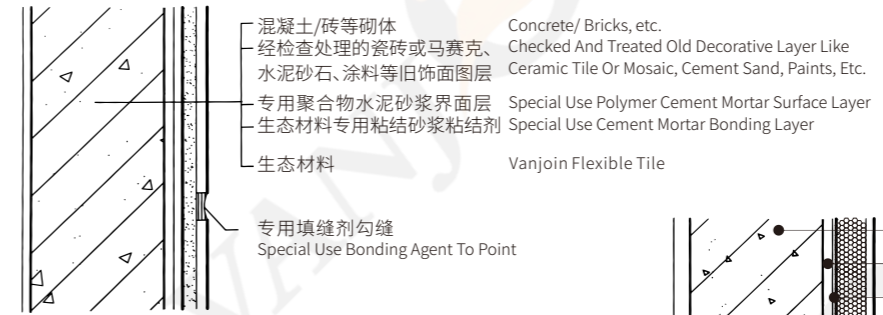
① 硅酮胶或专用填缝剂勾缝  
Silicone Adhesive or Special Use Bonding Agent to Point



② 墙根收口 (石材收口)  
Wall Foot Closing Up (Stone Material)



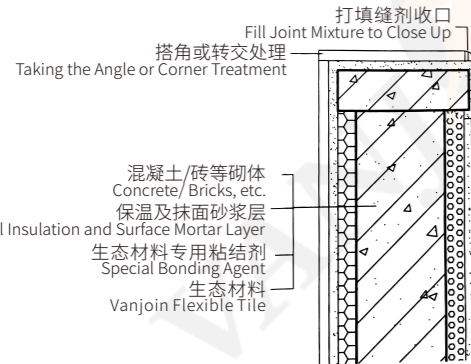
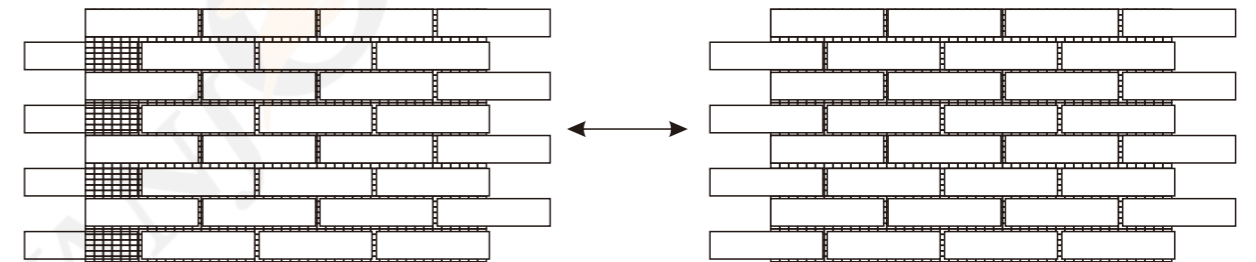
③ 密缝 Close Joint



### 连体劈开砖安装示意图 Installation Diagram for Connected Split Tile

用锯齿镭刀在墙面刮抹2-3mm厚万卓软瓷粘剂粘接层,宽度需超过连体劈开砖的宽度;双手拿起连体劈开砖按压到墙面上,用胶板拍打使其粘结均匀,保证每片劈开砖间隙一致;等粘剂半干时用钢筋条勾缝。

Using serrated trowel to scrap 2-3mm thickness Vanjoin Flexible Tile adhesive on the wall, the width of adhesive should be wider than the width of split brick; picking up the split brick by both hands and press it to the wall surface; then taping it with rubber plate to make the adhesive joint evenly, and ensuring the seam gap is same; when the adhesive is semi-dry, use steel bar to pull the joints.



③ 女儿墙收口 Parapet Wall Closing Up



① 不锈钢金属片压缝 Stainless Steel Metal Sheet Press Jointing